

## Pull Handles aluminum

### Item description/product images

METRIC  
Parts



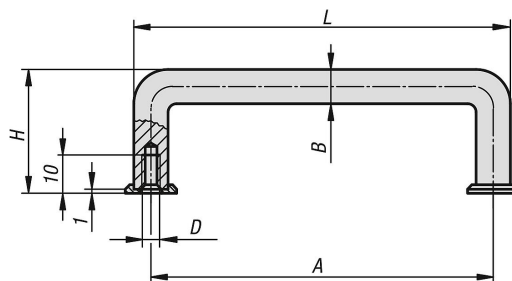
### Description

**Material:**  
Round aluminum

**Version:**  
Surface matt-finished and natural color or black anodised

**Note:**  
End washers not included.

### Drawings



### Pull Handles, aluminum, metric

Item No.	Main color	A	B	D	H	L	Load capacity N	Order No. end washer
K0201.055051	black	55	10	M5	40	65	500	K0201.1
K0201.088051	black	88	10	M5	40	98	500	K0201.1
K0201.100051	black	100	10	M5	40	110	500	K0201.1
K0201.120051	black	120	10	M5	40	130	500	K0201.1
K0201.180051	black	180	10	M5	40	190	500	K0201.1
K0201.200051	black	200	10	M5	40	210	500	K0201.1
K0201.235051	black	235	10	M5	40	245	500	K0201.1
K0201.250051	black	250	10	M5	40	260	500	K0201.1
K0201.055053	natural	55	10	M5	40	65	500	K0201.3
K0201.088053	natural	88	10	M5	40	98	500	K0201.3
K0201.100053	natural	100	10	M5	40	110	500	K0201.3
K0201.120053	natural	120	10	M5	40	130	500	K0201.3
K0201.180053	natural	180	10	M5	40	190	500	K0201.3
K0201.200053	natural	200	10	M5	40	210	500	K0201.3
K0201.235053	natural	235	10	M5	40	245	500	K0201.3
K0201.250053	natural	250	10	M5	40	260	500	K0201.3