

Pull Handles aluminum, metric

Item description/product images



Description

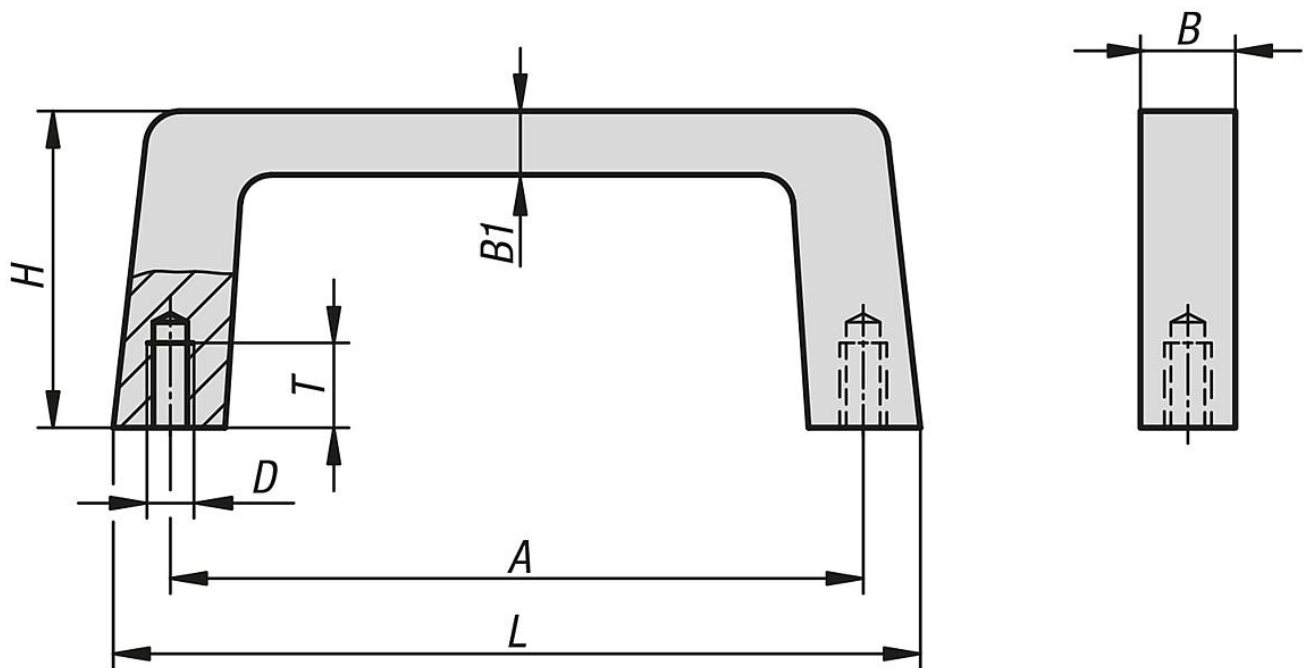
Material:
aluminum.

Version:
Matt-finished, anodised black or natural tone.

Order information:
Fastening screws included.

Assembly:
From the rear.

Drawings



Order No.	Color	Main material	A	B	B1	D	H	L	T	Load capacity N
K1075.055053	natural	aluminum	55	12,2	8	M5	40	69	10	750
K1075.088053	natural	aluminum	88	12,2	8	M5	40	102	10	750
K1075.120053	natural	aluminum	120	12,2	8	M5	40	134	10	750
K1075.180053	natural	aluminum	180	12,2	8	M5	40	194	10	750
K1075.235053	natural	aluminum	235	12,2	8	M5	40	249	10	750
K1075.055051	black	aluminum	55	12,2	8	M5	40	69	10	750
K1075.088051	black	aluminum	88	12,2	8	M5	40	102	10	750
K1075.120051	black	aluminum	120	12,2	8	M5	40	134	10	750
K1075.180051	black	aluminum	180	12,2	8	M5	40	194	10	750

