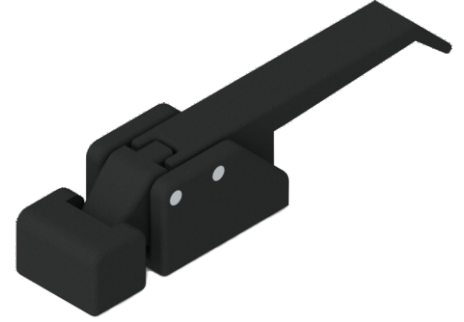


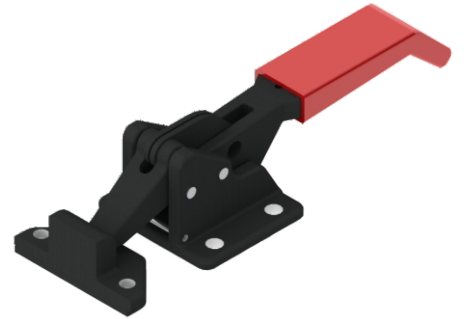
Medium Duty
Compression Latch

| | |
|--------------------|---------------------|
| Model No | PAH-10-351-20 |
| Weight | 0.600 Kgs |
| Holding Capacity | X - 21.60 kN |
| Material | Steel |
| Finish | Zinc Plated |
| Supplied with Hook | FH-10-351-20 |
| Model No | PAH-10-351-20-SS |
| Material | Stainless Steel-304 |
| Supplied with Hook | FH-10-351-20-SS |



Light Duty
Compression Latch

| | |
|--------------------|---------------------|
| Model No | PAH-10-501-21 |
| Weight | 1.000 Kgs |
| Holding Capacity | X - 21.60 kN |
| Material | Steel |
| Finish | Zinc Plated |
| Supplied with Hook | FH-10-501-21 |
| Model No | PAH-10-501-21-SS |
| Material | Stainless Steel-304 |
| Supplied with Hook | FH-10-501-21-SS |



Heavy Duty
Adjustable Latch Padlockable

| | |
|------------------|---------------------|
| Model No | PAH-11040 |
| Weight | 0.450 Kgs |
| Holding Capacity | X - 7.40 kN |
| Material | Steel |
| Finish | Zinc Plated |
| Model No | PAH-11040-SS |
| Material | Stainless Steel-304 |

