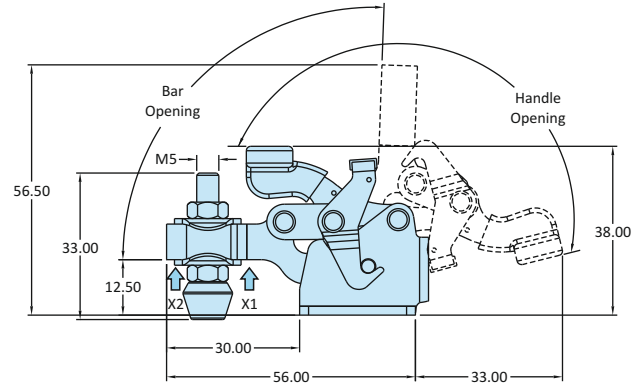
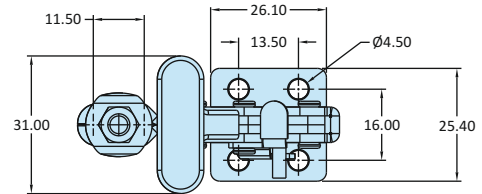
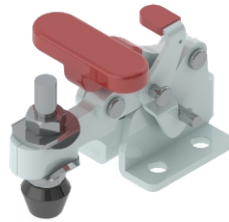


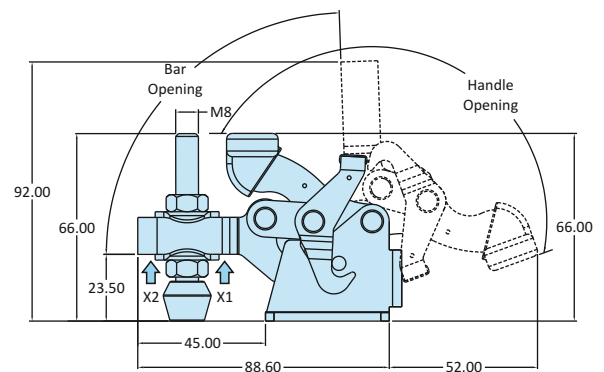
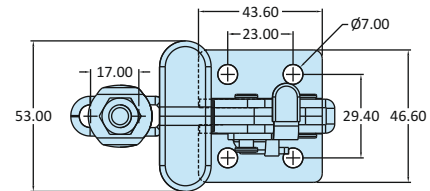
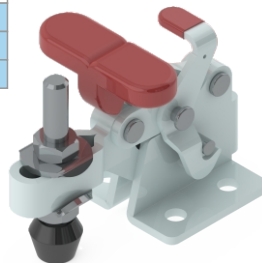
**Horizontal Hold Down Action
With Additional Locking Mechanism**

Model No	H-305-U-TRIG
Weight	0.070 Kgs
Handle Opening ($\pm 3^\circ$)	166°
Clamp Bar Opening ($\pm 3^\circ$)	92°
Holding Capacity	X1 - 0.50 kN
	X2 - 0.20 kN
Material	Steel
Finish	Zinc Plated
Arm Type	Adjustable Arm
Base Type	Flanged Base
Supplied with Spindle	RT-533-2N2W
Model No	H-305-U-TRIG-SS
Material	Stainless Steel-304
Supplied with Spindle	RT-533-2N2W-SS



**Horizontal Hold Down Action
With Additional Locking Mechanism**

Model No	H-307-U-TRIG
Weight	0.260 Kgs
Handle Opening ($\pm 3^\circ$)	175°
Clamp Bar Opening ($\pm 3^\circ$)	88°
Holding Capacity	X1 - 1.40 kN
	X2 - 1.10 kN
Material	Steel
Finish	Zinc Plated
Arm Type	Adjustable Arm
Base Type	Flanged Base
Supplied with Spindle	RT-865-2N2W
Model No	H-307-U-TRIG-SS
Material	Stainless Steel-304
Supplied with Spindle	RT-865-2N2W-SS



**Horizontal Hold Down Action
With Additional Locking Mechanism**

Model No	H-309-U-TRIG
Weight	0.720 Kgs
Handle Opening ($\pm 3^\circ$)	160°
Clamp Bar Opening ($\pm 3^\circ$)	90°
Holding Capacity	X1 - 3.40 kN
	X2 - 2.30 kN
Material	Steel
Finish	Zinc Plated
Arm Type	Adjustable Arm
Base Type	Flanged Base
Supplied with Spindle	RT-1085-2N2W
Model No	H-309-U-TRIG-SS
Material	Stainless Steel-304
Supplied with Spindle	RT-1085-2N2W-SS

