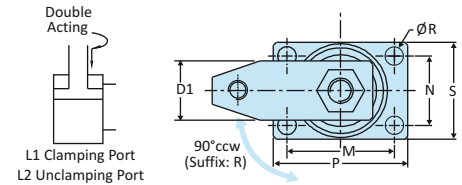
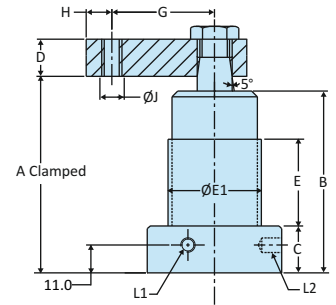


Hydraulic Swing Clamp

Lower Flange Version-Right Swing

- No Fixture hole required
- Cylinder can be bolted directly to the fixture
- Flexible design allows for manifold or threaded port connection
- Easiest mounting preparation in the swing clamp line
- Square flange design enables clamping at all four sides of the clamp
- Allows extra large parts to be clamped



For Single Acting clamp the Normal Condition will be clamped condition.

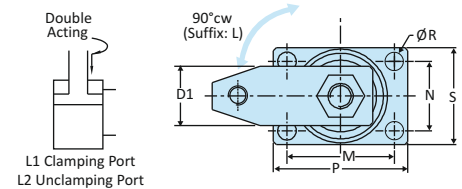
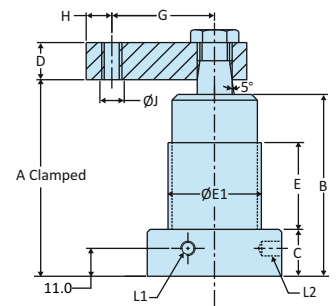
| | |
|------------------|-------------------------------|
| Material | Medium Carbon Steel Body |
| Finish | Black Anodizing |
| Acting Type | Single Acting / Double Acting |
| Force | 495 - 1600 kgs |
| Total Stroke | 23 - 33 mm |
| Working Pressure | 50 - 350 Bar |
| Swivel Angle | 90° ±2° |

| Model No | Weight Kgs | Dimensions | | | | | | | | | | | | | | | | | | | |
|----------------------|------------|-------------|-----------|--------------|-----------------|--|-----------|-----|----|----|----|-----------|----|----|-----|--------|----|----|----|-----|----|
| | | Piston Dia. | Bore Dia. | Swing Stroke | Clamping Stroke | Force in Kgs (210 kg/cm ²) | A Clamped | B | C | D | E | E1 | G | H | J | L | M | N | P | R | S |
| Single Acting | | | | | | | | | | | | | | | | | | | | | |
| SC-25A-NHLF-R | 1.600 | 18 | 25 | 12 | 11 | 495 | 112 | 106 | 22 | 19 | 48 | M45 x 1.5 | 45 | 10 | M12 | 1/8 PT | 50 | 30 | 64 | 6.5 | 46 |
| SC-32A-NHLF-R | 1.800 | 22 | 32 | 12 | 11 | 890 | 109 | 101 | 22 | 19 | 52 | M50 x 1.5 | 50 | 10 | M12 | 1/8 PT | 54 | 34 | 68 | 8.5 | 54 |
| SC-40A-NHLF-R | 2.800 | 25 | 40 | 12 | 11 | 1600 | 109 | 102 | 22 | 19 | 54 | M60 x 1.5 | 50 | 10 | M12 | 1/8 PT | 66 | 40 | 84 | 8.5 | 64 |
| Double Acting | | | | | | | | | | | | | | | | | | | | | |
| SC-25B-NHLF-R | 1.400 | 18 | 25 | 15 | 18 | 495 | 107 | 106 | 22 | 19 | 48 | M45 x 1.5 | 45 | 10 | M12 | 1/8 PT | 50 | 30 | 64 | 6.5 | 46 |
| SC-32B-NHLF-R | 1.700 | 22 | 32 | 15 | 18 | 890 | 107 | 101 | 22 | 19 | 52 | M50 x 1.5 | 50 | 10 | M12 | 1/8 PT | 54 | 34 | 68 | 8.5 | 54 |
| SC-40B-NHLF-R | 2.700 | 25 | 40 | 15 | 18 | 1600 | 107 | 102 | 22 | 19 | 54 | M60 x 1.5 | 50 | 10 | M12 | 1/8 PT | 66 | 40 | 84 | 8.5 | 64 |

Hydraulic Swing Clamp

Lower Flange Version-Left Swing

- No Fixture hole required
- Cylinder can be bolted directly to the fixture
- Flexible design allows for manifold or threaded port connection
- Easiest mounting preparation in the swing clamp line
- Square flange design enables clamping at all four sides of the clamp
- Allows extra large parts to be clamped



For Single Acting clamp the Normal Condition will be clamped condition.

| | |
|------------------|-------------------------------|
| Material | Medium Carbon Steel Body |
| Finish | Black Anodizing |
| Acting Type | Single Acting / Double Acting |
| Force | 495 - 1600 kgs |
| Total Stroke | 23 - 33 mm |
| Working Pressure | 50 - 350 Bar |
| Swivel Angle | 90° ±2° |

| Model No | Weight Kgs | Dimensions | | | | | | | | | | | | | | | | | | | |
|----------------------|------------|-------------|-----------|--------------|-----------------|--|-----------|-----|----|----|----|-----------|----|----|-----|--------|----|----|----|-----|----|
| | | Piston Dia. | Bore Dia. | Swing Stroke | Clamping Stroke | Force in Kgs (210 kg/cm ²) | A Clamped | B | C | D | E | E1 | G | H | J | L | M | N | P | R | S |
| Single Acting | | | | | | | | | | | | | | | | | | | | | |
| SC-25A-NHLF-L | 1.600 | 18 | 25 | 12 | 11 | 495 | 112 | 106 | 22 | 19 | 48 | M45 x 1.5 | 45 | 10 | M12 | 1/8 PT | 50 | 30 | 64 | 6.5 | 46 |
| SC-32A-NHLF-L | 1.800 | 22 | 32 | 12 | 11 | 890 | 109 | 101 | 22 | 19 | 52 | M50 x 1.5 | 50 | 10 | M12 | 1/8 PT | 54 | 34 | 68 | 8.5 | 54 |
| SC-40A-NHLF-L | 2.800 | 25 | 40 | 12 | 11 | 1600 | 109 | 102 | 22 | 19 | 54 | M60 x 1.5 | 50 | 10 | M12 | 1/8 PT | 66 | 40 | 84 | 8.5 | 64 |
| Double Acting | | | | | | | | | | | | | | | | | | | | | |
| SC-25B-NHLF-L | 1.400 | 18 | 25 | 15 | 18 | 495 | 107 | 106 | 22 | 19 | 48 | M45 x 1.5 | 45 | 10 | M12 | 1/8 PT | 50 | 30 | 64 | 6.5 | 46 |
| SC-32B-NHLF-L | 1.700 | 22 | 32 | 15 | 18 | 890 | 107 | 101 | 22 | 19 | 52 | M50 x 1.5 | 50 | 10 | M12 | 1/8 PT | 54 | 34 | 68 | 8.5 | 54 |
| SC-40B-NHLF-L | 2.700 | 25 | 40 | 15 | 18 | 1600 | 107 | 102 | 22 | 19 | 54 | M60 x 1.5 | 50 | 10 | M12 | 1/8 PT | 66 | 40 | 84 | 8.5 | 64 |