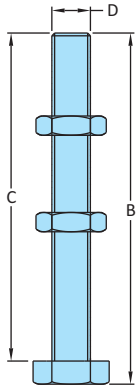
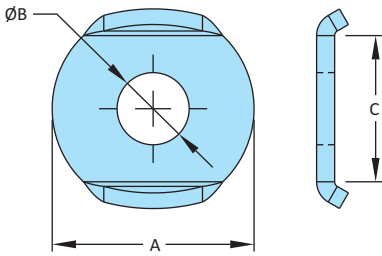


Standard Hex Spindles  
SH with 2 Nuts



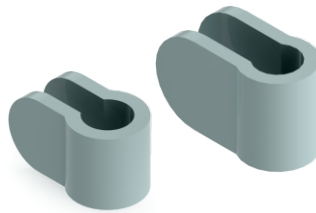
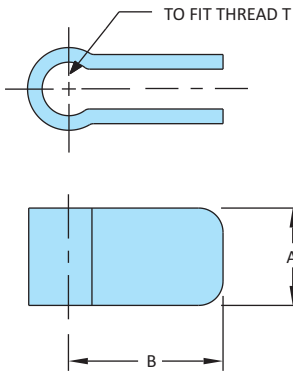
Model No.	B	C	D	Weight Kgs
SH-645-2N	49	45	M6	0.020
SH-865-2N	70	64	M8	0.040
SH-1085-2N	97	90	M10	0.090
SH-12115-2N	132	124	M12	0.150
SH-12155-2N	150	142	M12	0.170
SH-16170-2N	192	181	M16	0.600

Washers



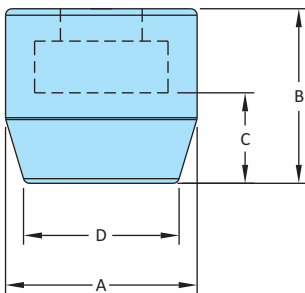
Model No.	A	B	C	Weight Kgs	Stainless Steel Model No.
M4-WSHR	9	4.2	-	0.001	M4-WSHR-SS
M5-WSHR	15	5.2	9.5	0.013	M5-WSHR-SS
M6-WSHR	19.5	6.2	13.5	0.031	M6-WSHR-SS
M8-WSHR	22.5	8.2	16.5	0.005	M8-WSHR-SS
M10-WSHR	25	10.2	19.5	0.008	M10-WSHR-SS
M12-WSHR	27.5	12.2	21.5	0.009	M12-WSHR-SS
M16-WSHR	31	16.2	29.5	0.025	M16-WSHR-SS

Bolt Retainers



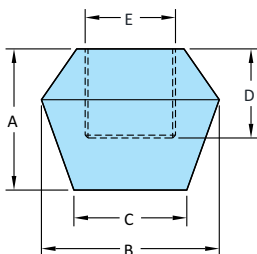
Model No.	A	B	TØ	Weight Kgs
BR-1	10	20	6	0.001
BR-2	20	27	10	0.013
BR-3	20	30	12	0.031
BR-4	25	32	16	0.005
BR-5	12	23	8	0.008
BR-6	20	27	10	0.009
BR-7	25	30	12	0.025

Rubber Caps-RC



Model No.	A	B	C	D	For Hex Bolt Size	Weight Kgs
RC-512	12.5	10	5	8	M5	0.001
RC-615	15	12	6	10	M6	0.002
RC-819	19	15	7.5	13	M8	0.003
RC-1022	22	17.5	8.5	15	M10	0.004

Nylon Tip Caps-NT  
Material - White Nylon



Model No.	A	B	C	D	E	Weight Kgs
NT-613	13	15	11	10	M6	0.002
NT-815	15.5	17.7	13	10	M8	0.003
NT-1018	18.5	23.5	17	13	M10	0.005
NT-1218	18.5	23.5	17	13	M12	0.005
NT-1625	25	31.5	20	22	M16	0.010