

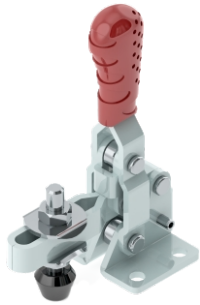
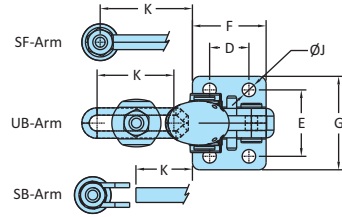
VTC-Series

Medium Duty Clamps-Flanged Base

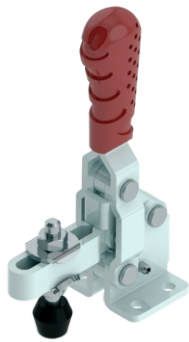
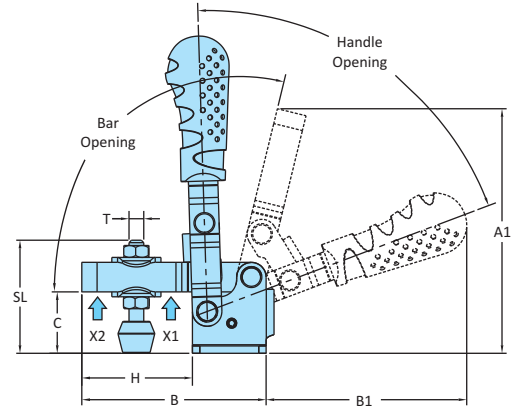
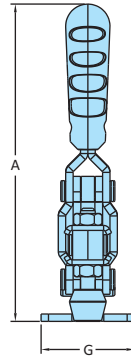
The **SF Series** have a solid hold down bar which has a fixed guide bush at its end for the spindle assembly.

The **SB Series** have a 'U' bar arm which the bolt retainer can be welded at any desired angle.

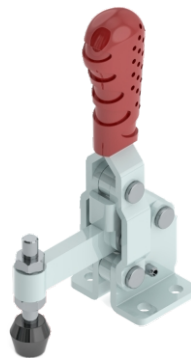
The **UB Series** have a 'U' bar arm which enables one or more spindles to be moved into any desired position along the arm.



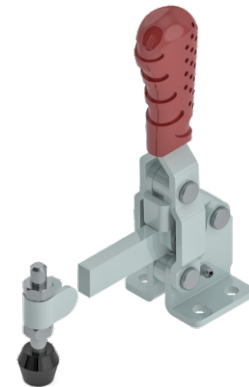
Model No.VTC-1625-UB



Model No.VTC-2535-UB



Model No.VTC-2535-SF



Model No.VTC-2535-SB

Model No.	Material	Finish	Arm Type	Base Type	Supplied With		Holding Capacity	
					Spindle Assembly	Washers	X2	X1
VTC-1625-UB	Steel	Zinc Plated	Adjustable Arm	Flanged Base	RT-533-2N2W	M5-WSHR	0.20 kN	0.50 kN
VTC-1625-SF	Steel	Zinc Plated	Spindle Fixed	Flanged Base	RT-533-2N	-	0.20 kN	-
VTC-2535-UB	Steel	Zinc Plated	Adjustable Arm	Flanged Base	RT-645-2N2W	M6-WSHR	0.50 kN	1.00 kN
VTC-2535-SF	Steel	Zinc Plated	Spindle Fixed	Flanged Base	RT-645-2N	-	0.50 kN	-
VTC-2535-SB	Steel	Zinc Plated	Solid Arm	Flanged Base	RT-645-2N	-	0.50 kN	1.00 kN
VTC-1625-UB-SS	Stainless Steel-304	Electro Polishing	Adjustable Arm	Flanged Base	RT-533-2N2W-SS	M5-WSHR-SS	0.20 kN	0.50 kN
VTC-2535-UB-SS	Stainless Steel-304	Electro Polishing	Adjustable Arm	Flanged Base	RT-645-2N2W-SS	M6-WSHR-SS	0.50 kN	1.00 kN

Model No.	Weight Kgs	Handle Opening	Bar Opening	Dimensions													
				A	A1	B	B1	C	D	E	F	G	H	J	K	T	SL
VTC-1625-UB	0.080	60°	101°	86	72	56	53	16	16	24	25	33	31	4.5	23	M5	33
VTC-1625-SF	0.080	60°	101°	86	72	57	53	16	16	24	25	33	32	4.5	27	M5	33
VTC-2535-UB	0.220	64°	104°	129	99.5	75	82	25	16	27	30	38	45	5.5	32	M6	46
VTC-2535-SF	0.220	64°	104°	129	98.5	74	82	25	16	27	30	38	44	5.5	38	M6	46
VTC-2535-SB	0.220	64°	104°	129	97	72	82	25	16	27	30	38	42	5.5	42	M6	46
VTC-1625-UB-SS	0.080	60°	101°	86	72	56	53	16	16	24	25	33	31	4.5	23	M5	33
VTC-2535-UB-SS	0.220	64°	104°	129	99.5	75	82	25	16	27	30	38	45	5.5	32	M6	46