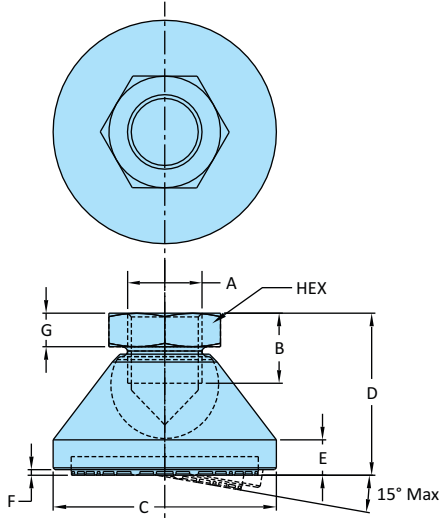


Anti-Skid Leveling Pads - Internal Thread



**\*Black Electro-Deposition Coating**

Steel Version	Model No.	Weight Kgs	Max. Capacity for Static Load	Dimensions							
				A	B	C	D	E	F	G	HEX
Material Thrust Plate : Steel Ball Element : Steel Anti-Skid Pad : NBR Rubber SH 75 Finish : Black ED* Coating	SLPF-1032-RP	0.077	20 kN	M10	9.0	32	23.50	6.5	1.5	7	17
	SLPF-1240-RP	0.125	35 kN	M12	11.0	40	27.50	7.5	1.5	7	19
	SLPF-1650-RP	0.250	45 kN	M16	13.5	50	33.50	8.5	1.5	8	24
	SLPF-2060-RP	0.480	55 kN	M20	17.0	60	43.50	9.5	1.5	10	30
	SLPF-2460-RP	0.665	65 kN	M24	19.0	60	46.50	11.0	1.5	10	36

Stainless Steel Version	Model No.	Weight Kgs	Max. Capacity for Static Load	Dimensions							
				A	B	C	D	E	F	G	HEX
Material Thrust Plate : Stainless Steel-304 Ball Element : Stainless Steel-304 Anti-Skid Pad : NBR Rubber SH 75 Finish : Electro-Polished	SLPF-1032-SS-RP	0.077	20 kN	M10	9.0	32	23.50	6.5	1.5	7	17
	SLPF-1240-SS-RP	0.125	35 kN	M12	11.0	40	27.50	7.5	1.5	7	19
	SLPF-1650-SS-RP	0.250	45 kN	M16	13.5	50	33.50	8.5	1.5	8	24
	SLPF-2060-SS-RP	0.480	55 kN	M20	17.0	60	43.50	9.5	1.5	10	30
	SLPF-2460-SS-RP	0.665	65 kN	M24	19.0	60	46.50	11.0	1.5	10	36