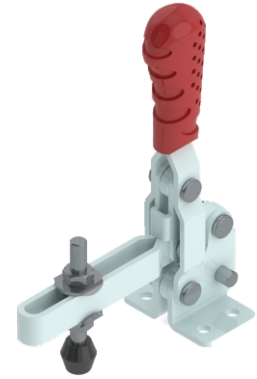
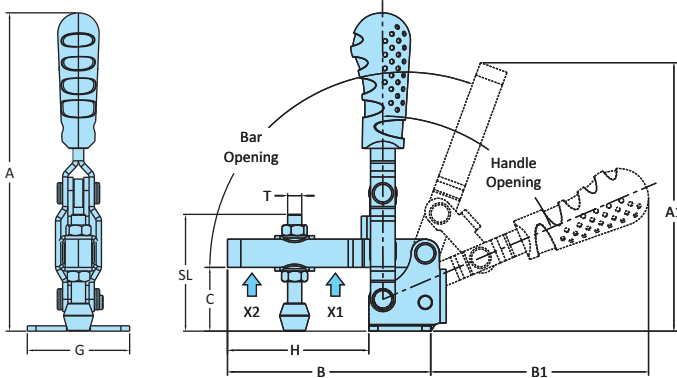
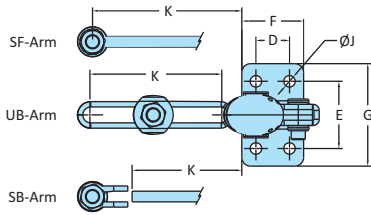


VTC-Series
Medium Duty Clamps-Flanged Base

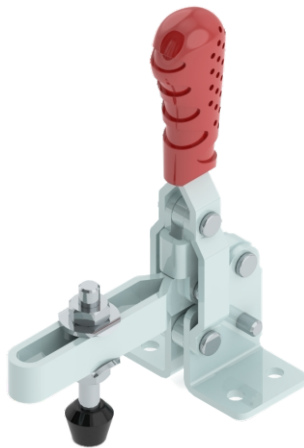
The **SF Series** have a solid hold down bar which has a fixed guide bush at its end for the spindle assembly.

The **SB Series** have a 'U' bar arm which the bolt retainer can be welded at any desired angle.

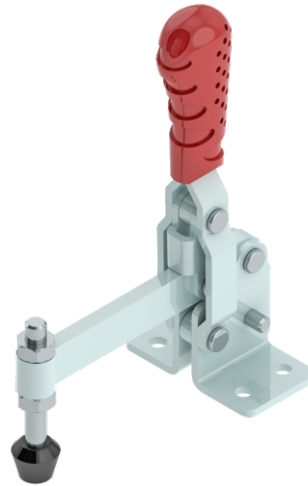
The **UB Series** have a 'U' bar arm which enables one or more spindles to be moved into any desired position along the arm.



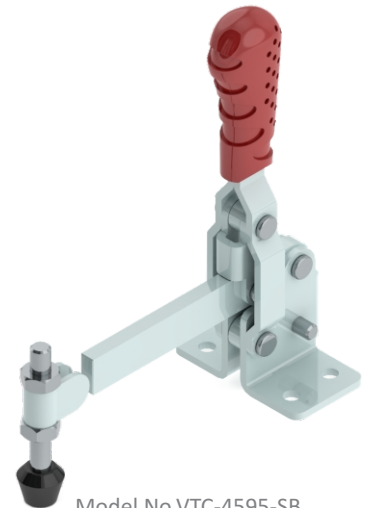
Model No.VTC-3670-UB



Model No.VTC-4595-UB



Model No.VTC-4595-SF



Model No.VTC-4595-SB

Model No.	Material	Finish	Arm Type	Base Type	Supplied With		Holding Capacity	
					Spindle Assembly	Washers	X2	X1
VTC-3050-UB	Steel	Zinc Plated	Adjustable Arm	Flanged Base	RT-865-2N2W	M8-WSHR	0.75 kN	1.50 kN
VTC-3670-UB	Steel	Zinc Plated	Adjustable Arm	Flanged Base	RT-865-2N2W	M8-WSHR	1.00 kN	2.00 kN
VTC-3670-SF	Steel	Zinc Plated	Spindle Fixed	Flanged Base	RT-865-2N	-	1.00 kN	-
VTC-3670-SB	Steel	Zinc Plated	Solid Arm	Flanged Base	RT-865-2N	-	1.00 kN	2.00 kN
VTC-4595-UB	Steel	Zinc Plated	Adjustable Arm	Flanged Base	RT-1085-2N2W	M10-WSHR	2.00 kN	3.90 kN
VTC-4595-SF	Steel	Zinc Plated	Spindle Fixed	Flanged Base	RT-1085-2N	-	2.00 kN	-
VTC-4595-SB	Steel	Zinc Plated	Solid Arm	Flanged Base	RT-1085-2N	-	2.00 kN	3.90 kN
VTC-3670-UB-SS	Stainless Steel-304	Electro Polishing	Adjustable Arm	Flanged Base	RT-865-2N2W-SS	M8-WSHR-SS	1.00 kN	2.00 kN
VTC-4595-UB-SS	Stainless Steel-304	Electro Polishing	Adjustable Arm	Flanged Base	RT-1085-2N2W-SS	M10-WSHR-SS	2.00 kN	3.90 kN

Model No.	Weight Kgs	Handle Opening	Bar Opening	Dimensions													
				A	A1	B	B1	C	D	E	F	G	H	J	K	T	SL
VTC-3050-UB	0.350	64°	110°	145	115	85	100	30	19	32	35	46	50	7.2	46.5	M8	66
VTC-3670 UB	0.410	64°	110°	180	152	115	123	36	19	38	35	58	80	6.5	61.5	M8	66
VTC-3670 SF	0.410	64°	110°	180	152	115	123	36	19	38	35	58	80	6.5	73	M8	66
VTC-3670 SB	0.410	64°	110°	180	140	102	123	36	19	38	35	58	67	6.5	67	M8	66
VTC-4595 UB	0.820	72°	120°	205	182	151	133	45	25	55	45	82	105	8.5	79	M10	86
VTC-4595 SF	0.820	72°	120°	205	182	151	133	45	25	55	45	82	106	8.5	97	M10	86
VTC-4595 SB	0.820	72°	120°	205	173	141	133	45	25	55	45	82	96	8.5	96	M10	86
VTC-3670-UB-SS	0.410	64°	110°	180	152	115	123	36	19	38	35	58	80	6.5	61.5	M8	66
VTC-4595-UB-SS	0.820	72°	120°	205	182	151	133	45	25	55	45	82	105	8.5	79	M10	86