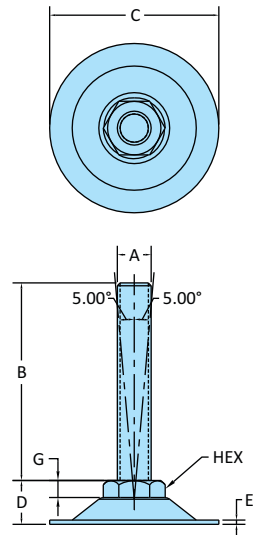
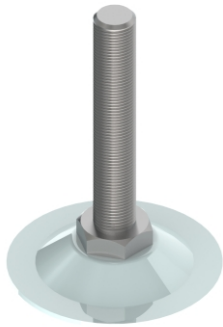


Non-Swivel Leveling Pads - External Thread

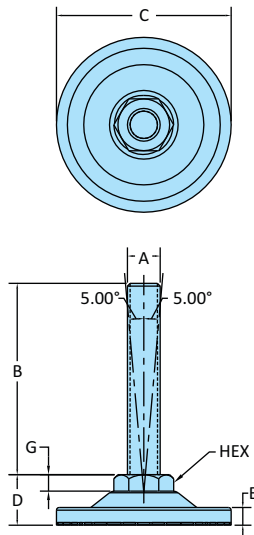
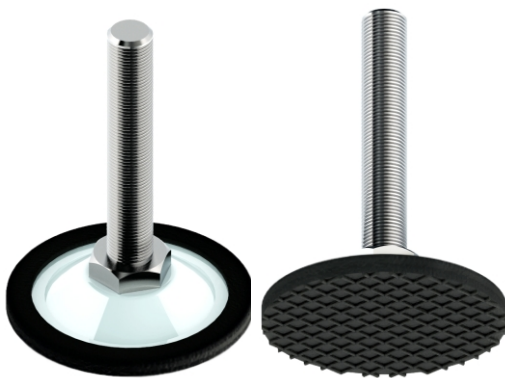


Also Available in Nickel Plated Option

| Steel Version | Model No. | Weight Kgs | Max. Capacity for Static Load | Dimensions | | | | | | |
|---|--------------------|------------|-------------------------------|------------|----|----|------|-----|---|-----|
| | | | | A | B | C | D | E | G | HEX |
| Material Thrust Plate : Steel | SLPM-SM-60-LD-1070 | 0.088 | 2.90 kN | M10 | 70 | 61 | 15.5 | 1.5 | 6 | 14 |
| Stud : Steel Finish : White Zinc Plating | SLPM-SM-60-LD-1270 | 0.095 | 2.90 kN | M12 | 70 | 61 | 15.5 | 1.5 | 6 | 16 |

| Stainless Steel Version | Model No. | Weight Kgs | Max. Capacity for Static Load | Dimensions | | | | | | |
|---|-----------------------|------------|-------------------------------|------------|----|----|------|-----|---|-----|
| | | | | A | B | C | D | E | G | HEX |
| Material Thrust Plate : Stainless-Steel-304 | SLPM-SM-60-LD-1070-SS | 0.090 | 2.90 kN | M10 | 70 | 61 | 15.5 | 1.5 | 6 | 14 |
| Stud : Stainless-Steel-304 Finish : Electro-Polished | SLPM-SM-60-LD-1270-SS | 0.100 | 2.90 kN | M12 | 70 | 61 | 15.5 | 1.5 | 6 | 16 |

Anti-Skid Leveling Pads - Non-Swivel External Thread



Also Available in Nickel Plated Option

| Steel Version | Model No. | Weight Kgs | Max. Capacity for Static Load | Dimensions | | | | | | |
|---|-----------------------|------------|-------------------------------|------------|----|----|------|-----|---|-----|
| | | | | A | B | C | D | E | G | HEX |
| Material Thrust Plate : Steel | SLPM-SM-60-LD-1070-RP | 0.100 | 2.90 kN | M10 | 70 | 64 | 15.5 | 6.5 | 6 | 14 |
| Stud : Steel Anti-Skid Pad : NBR Rubber SH 75 Finish : White Zinc Plating | SLPM-SM-60-LD-1270-RP | 0.107 | 2.90 kN | M12 | 70 | 64 | 15.5 | 6.5 | 6 | 16 |

| Stainless Steel Version | Model No. | Weight Kgs | Max. Capacity for Static Load | Dimensions | | | | | | |
|---|--------------------------|------------|-------------------------------|------------|----|----|------|-----|---|-----|
| | | | | A | B | C | D | E | G | HEX |
| Material Thrust Plate : Stainless-Steel-304 | SLPM-SM-60-LD-1070-RP-SS | 0.102 | 2.90 kN | M10 | 70 | 64 | 15.5 | 6.5 | 6 | 14 |
| Stud : Stainless-Steel-304 Anti-Skid Pad : NBR Rubber SH 75 Finish : Electro-Polished | SLPM-SM-60-LD-1270-RP-SS | 0.112 | 2.90 kN | M12 | 70 | 64 | 15.5 | 6.5 | 6 | 16 |