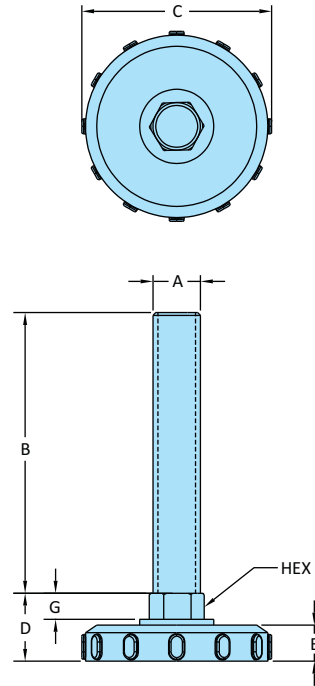
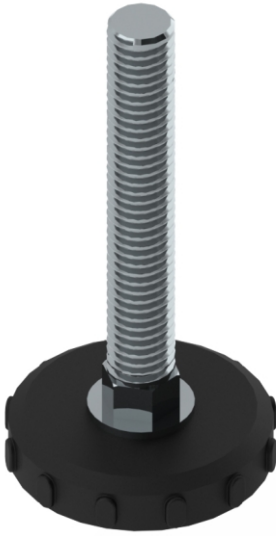


POM-Base Fixed Leveling Pads



Also Available in Nickel Plated Option

Steel Version	Model No.	Weight Kgs	Max. Capacity for Static Load	Dimensions						
				A	B	C	D	E	G	HEX
Material : POM Base : POM Stud : Steel Washer : Steel Finish : White Zinc Plating	LPF-625-50	0.041	6.70 kN	M6	25	50.8	18	9.75	7	12.7
	LPF-650-50	0.046	6.70 kN	M6	50	50.8	18	9.75	7	12.7
	LPF-675-50	0.050	6.70 kN	M6	75	50.8	18	9.75	7	12.7
	LPF-825-50	0.045	6.70 kN	M8	25	50.8	18	9.75	7	12.7
	LPF-850-50	0.052	6.70 kN	M8	50	50.8	18	9.75	7	12.7
	LPF-875-50	0.062	6.70 kN	M8	75	50.8	18	9.75	7	12.7
	LPF-1025-50	0.050	6.70 kN	M10	25	50.8	18	9.75	7	12.7
	LPF-1050-50	0.062	6.70 kN	M10	50	50.8	18	9.75	7	12.7
	LPF-1075-50	0.076	6.70 kN	M10	75	50.8	18	9.75	7	12.7
	LPF-10100-50	0.088	6.70 kN	M10	100	50.8	18	9.75	7	12.7
	LPF-1225-50	0.056	6.70 kN	M12	25	50.8	18	9.75	7	12.7
	LPF-1250-50	0.076	6.70 kN	M12	50	50.8	18	9.75	7	12.7
	LPF-1275-50	0.094	6.70 kN	M12	75	50.8	18	9.75	7	12.7
	LPF-12100-50	0.114	6.70 kN	M12	100	50.8	18	9.75	7	12.7

Stainless-Steel Version	Model No.	Weight Kgs	Max. Capacity for Static Load	Dimensions						
				A	B	C	D	E	G	HEX
Material : POM Base : POM Stud : Stainless-Steel-304 Washer : Stainless-Steel-304 Finish : Electro-Polished	LPF-625-50-SS	0.044	6.70 kN	M6	25	50.8	18	9.75	7	12.7
	LPF-650-50-SS	0.049	6.70 kN	M6	50	50.8	18	9.75	7	12.7
	LPF-675-50-SS	0.053	6.70 kN	M6	75	50.8	18	9.75	7	12.7
	LPF-825-50-SS	0.048	6.70 kN	M8	25	50.8	18	9.75	7	12.7
	LPF-850-50-SS	0.055	6.70 kN	M8	50	50.8	18	9.75	7	12.7
	LPF-875-50-SS	0.065	6.70 kN	M8	75	50.8	18	9.75	7	12.7
	LPF-1025-50-SS	0.053	6.70 kN	M10	25	50.8	18	9.75	7	12.7
	LPF-1050-50-SS	0.065	6.70 kN	M10	50	50.8	18	9.75	7	12.7
	LPF-1075-50-SS	0.079	6.70 kN	M10	75	50.8	18	9.75	7	12.7
	LPF-10100-50-SS	0.091	6.70 kN	M10	100	50.8	18	9.75	7	12.7
	LPF-1225-50-SS	0.059	6.70 kN	M12	25	50.8	18	9.75	7	12.7
	LPF-1250-50-SS	0.079	6.70 kN	M12	50	50.8	18	9.75	7	12.7
	LPF-1275-50-SS	0.097	6.70 kN	M12	75	50.8	18	9.75	7	12.7
	LPF-12100-50-SS	0.117	6.70 kN	M12	100	50.8	18	9.75	7	12.7