

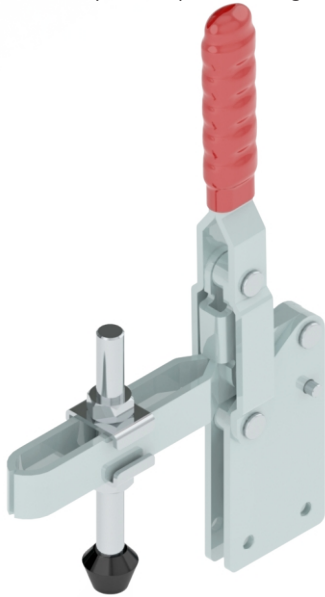
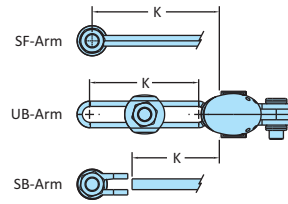
VTC-Series

Medium Duty Clamps-Straight Base

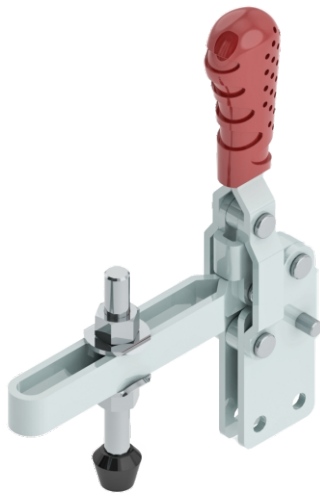
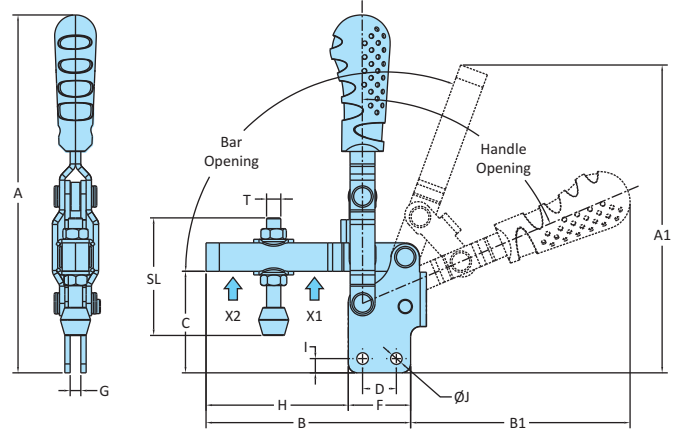
The **SF Series** have a solid hold down bar which has a fixed guide bush at its end for the spindle assembly.

The **SB Series** have a 'U' bar arm which the bolt retainer can be welded at any desired angle.

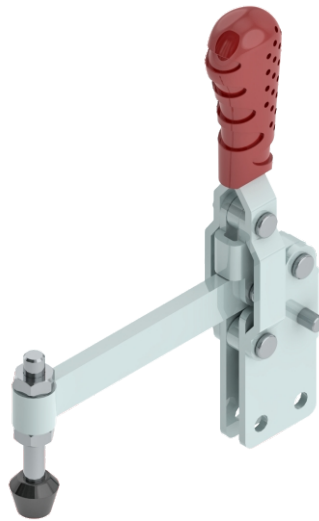
The **UB Series** have a 'U' bar arm which enables one or more spindles to be moved into any desired position along the arm.



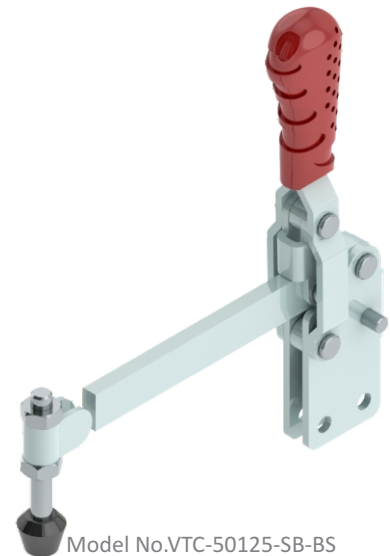
Model No. VTC-85150-UB-BS



Model No. VTC-50125-UB-BS



Model No. VTC-50125-SF-BS



Model No. VTC-50125-SB-BS

Model No.	Material	Finish	Arm Type	Base Type	Supplied With		Holding Capacity	
					Spindle Assembly	Washers	X2	X1
VTC-50125-UB-BS	Steel	Zinc Plated	Adjustable Arm	Straight Base	RT-12115-2N2W	M12-WSHR	1.60 kN	3.40 kN
VTC-50125-SF-BS	Steel	Zinc Plated	Spindle Fixed	Straight Base	RT-12115-2N	-	1.60 kN	-
VTC-50125-SB-BS	Steel	Zinc Plated	Solid Arm	Straight Base	RT-12115-2N	-	1.60 kN	3.40 kN
VTC-85150-UB-BS	Steel	Zinc Plated	Adjustable Arm	Straight Base	RT-16170-2N2W	M16-WSHR	3.50 kN	5.90 kN
VTC-85150-SF-BS	Steel	Zinc Plated	Spindle Fixed	Straight Base	RT-16170-2N	-	3.50 kN	-
VTC-85150-SB-BS	Steel	Zinc Plated	Solid Arm	Straight Base	RT-16170-2N	-	3.50 kN	5.90 kN

Model No.	Weight Kgs	Handle Opening	Bar Opening	Dimensions													
				A	A1	B	B1	C	D	E	F	G	H	J	K	T	SL
VTC-50125-UB-BS	0.910	72°	120°	235	240.5	183	132	76	25	11	45	8	138	8.5	113	M12	116
VTC-50125-SF-BS	0.910	72°	120°	235	240	183	133	75	25	11	45	8	138	8.5	128	M12	116
VTC-50125-SB-BS	0.910	72°	120°	235	233	175	133	75	25	11	45	8	130	8.5	130	M12	116
VTC-85150-UB-BS	2.450	75°	107°	377	358	238	202.5	116	45	15	76	10	162	8.5	109	M16	173
VTC-85150-SF-BS	2.450	75°	107°	377	355	240	203.5	116	45	15	76	10	165	8.5	149	M16	173
VTC-85150-SB-BS	2.450	75°	107°	377	338	218	201.5	116	45	15	76	10	142	8.5	142	M16	173