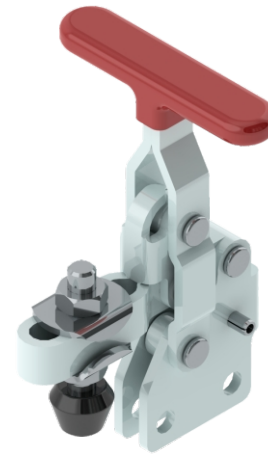
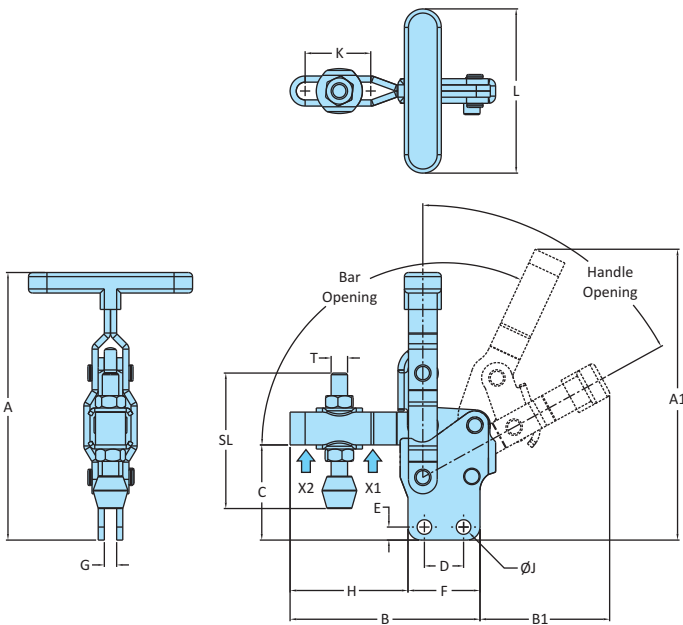
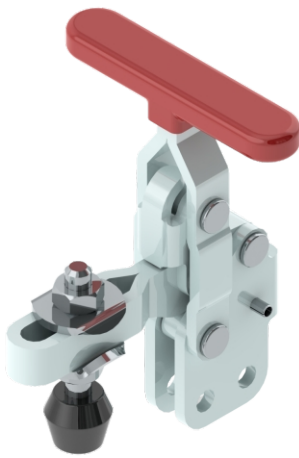
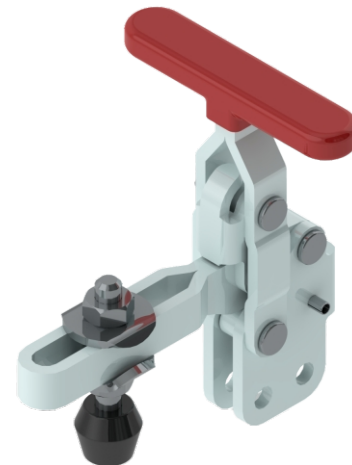


Vertical Hold Down Action
 Straight Base-T-Handle Clamps


Model No. VTC-201-TUB



Model No. VTC-202-TUB



Model No. VTC-202-TULB

Model No.	Material	Finish	Arm Type	Base Type	Supplied With		Holding Capacity	
					Spindle Assembly	Washers	X2	X1
VTC-201-TUB	Steel	Zinc Plated	Adjustable Arm	Straight Base	RT-533-2N2W	M5-WSHR	0.24 kN	0.50 kN
VTC-202-TUB	Steel	Zinc Plated	Adjustable Arm	Straight Base	RT-645-2N2W	M6-WSHR	0.62 kN	1.00 kN
VTC-202-TULB	Steel	Zinc Plated	Adjustable Arm	Straight Base	RT-645-2N2W	M6-WSHR	0.62 kN	1.00 kN
VTC-201-TUB-SS	Stainless Steel-304	Electro Polishing	Adjustable Arm	Straight Base	RT-533-2N2W-SS	M5-WSHR-SS	0.24 kN	0.50 kN
VTC-202-TUB-SS	Stainless Steel-304	Electro Polishing	Adjustable Arm	Straight Base	RT-645-2N2W-SS	M6-WSHR-SS	0.62 kN	1.00 kN
VTC-202-TULB-SS	Stainless Steel-304	Electro Polishing	Adjustable Arm	Straight Base	RT-645-2N2W-SS	M6-WSHR-SS	0.62 kN	1.00 kN

Model No.	Weight Kgs	Handle Opening	Bar Opening	Dimensions														
				A	A1	B	B1	C	D	E	F	G	H	J	K	L	T	SL
VTC-201-TUB	0.090	63°	110°	75.5	75.5	50.5	36.5	26.5	16	5	25	4	25.5	4.5	18.3	48	M5	33
VTC-202-TUB	0.160	63°	104°	91	105.5	71.3	41.5	35	12.7	6.8	25.5	6	45.8	5.5	25.4	66	M6	46
VTC-202-TULB	0.160	63°	104°	91	120	86	39.5	35.1	12.7	6.8	25.5	6	60.5	5.5	40	66	M6	46
VTC-201-TUB-SS	0.090	63°	110°	75.5	75.5	50.5	36.5	26.5	16	5	25	4	25.5	4.5	18.3	48	M5	33
VTC-202-TUB-SS	0.160	63°	104°	91	105.5	71.3	41.5	35	12.7	6.8	25.5	6	45.8	5.5	25.4	66	M6	46
VTC-202-TULB-SS	0.160	63°	104°	91	120	86	39.5	35.1	12.7	6.8	25.5	6	60.5	5.5	40	66	M6	46