

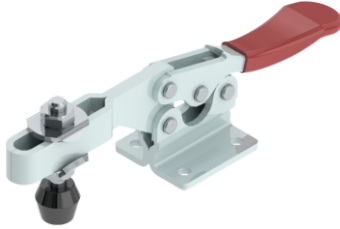
H-Series

Medium Duty Clamps-Flanged Base

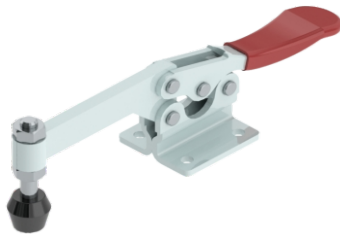
The **SF Series** have a solid hold down bar which has a fixed guide bush at its end for the spindle assembly.

The **SB Series** have a 'U' bar arm which the bolt retainer can be welded at any desired angle.

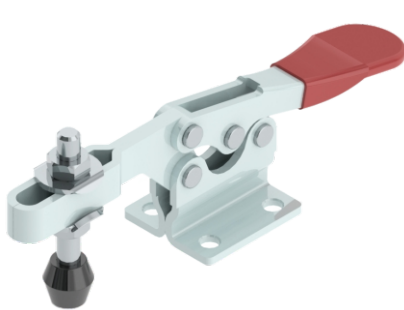
The **UB Series** have a 'U' bar arm which enables one or more spindles to be moved into any desired position along the arm.



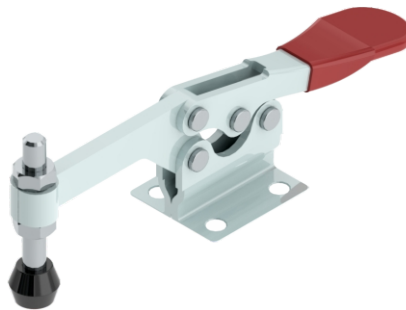
Model No. H-2655-UB



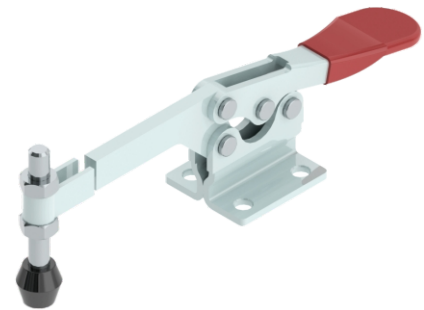
Model No. H-2655-SF



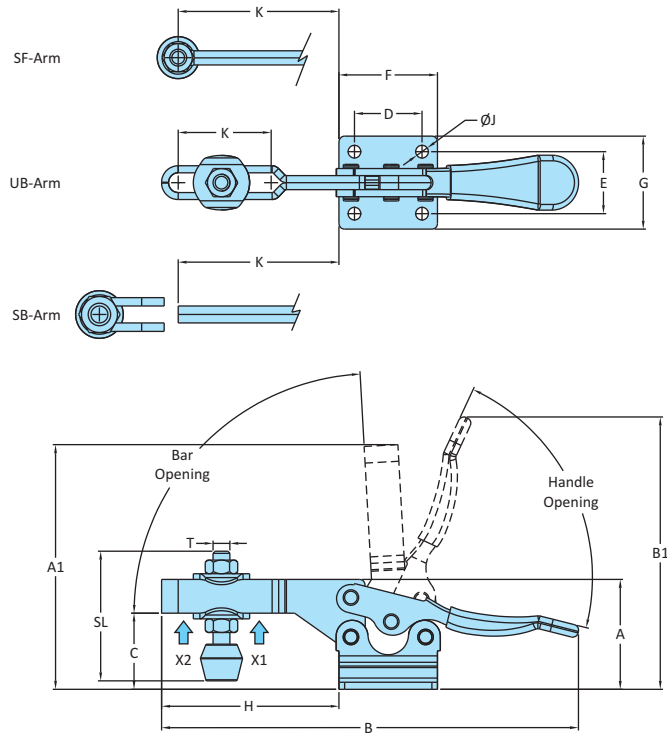
Model No. H-3665-UB



Model No. H-3665-SF



Model No. H-3665-SB



Model No.	Material	Finish	Arm Type	Base Type	Supplied With		Holding Capacity	
					Spindle Assembly	Washers	X2	X1
H-2655-UB	Steel	Zinc Plated	Adjustable Arm	Flanged Base	RT-645-2N2W	M6-W SHR	0.50 kN	1.40 kN
H-2655-SF	Steel	Zinc Plated	Spindle Fixed	Flanged Base	RT-645-2N	-	0.50 kN	-
H-3665-UB	Steel	Zinc Plated	Adjustable Arm	Flanged Base	RT-865-2N2W	M8-W SHR	1.10 kN	2.40 kN
H-3665-SF	Steel	Zinc Plated	Spindle Fixed	Flanged Base	RT-865-2N	-	1.10 kN	-
H-3665-SB	Steel	Zinc Plated	Solid Arm	Flanged Base	RT-865-2N	-	1.10 kN	2.40 kN
H-2655-UB-SS	Stainless Steel-304	Electro Polishing	Adjustable Arm	Flanged Base	RT-645-2N2W-SS	M6-W SHR-SS	0.50 kN	1.40 kN
H-3665-UB-SS	Stainless Steel-304	Electro Polishing	Adjustable Arm	Flanged Base	RT-865-2N2W-SS	M8-W SHR-SS	1.10 kN	2.40 kN

Model No.	Weight Kgs	Handle Opening	Bar Opening	Dimensions													
				A	A1	B	B1	C	D	E	F	G	H	J	K	T	SL
H-2655-UB	0.150	76°	85°	39	87	148	94.88	27	24	22	35	33	63	4.5	33	M6	46
H-2655-SF	0.150	76°	85°	39	87	148	95	27	24	22	35	33	63	4.5	57.5	M6	46
H-3665-UB	0.280	72°	90°	49	102	175	117	36	29	26	44	40	70	6.5	31	M8	66
H-3665-SF	0.280	72°	90°	49	102	175	117	36	29	26	44	40	70	6.5	62.5	M8	66
H-3665-SB	0.280	72°	90°	49	89	162	117	36	29	26	44	40	57	6.5	57	M8	66
H-2655-UB-SS	0.150	76°	90°	39	87	148	94.88	27	24	22	35	33	64	4.5	33	M6	46
H-3665-UB-SS	0.280	72°	90°	49	102	175	117	36	29	26	44	40	70	6.5	31	M8	66