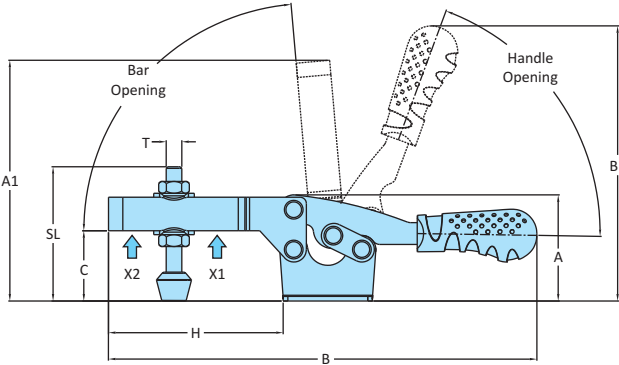
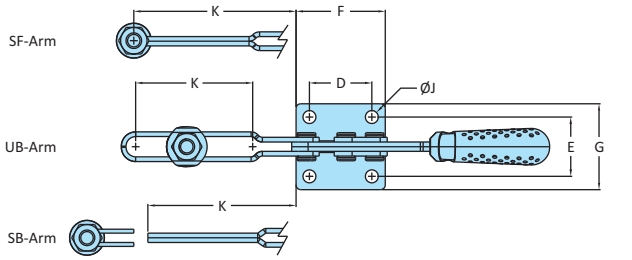


H-Series
Medium Duty Clamps-Flanged Base

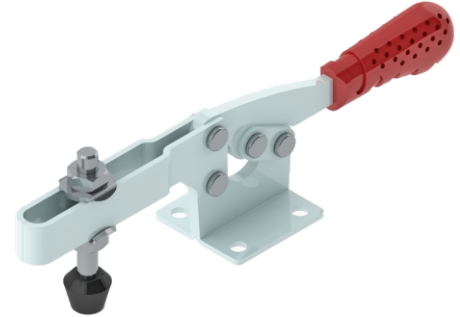
The **SF Series** have a solid hold down bar which has a fixed guide bush at its end for the spindle assembly.

The **SB Series** have a 'U' bar arm which the bolt retainer can be welded at any desired angle.

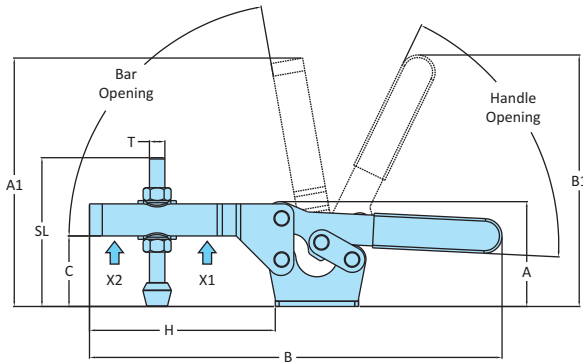
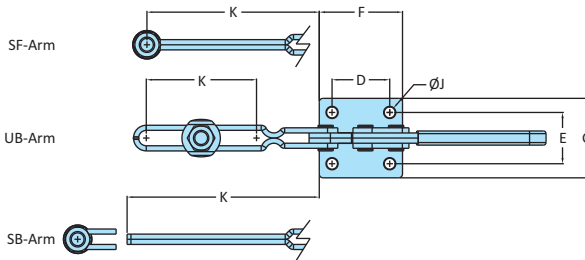
The **UB Series** have a 'U' bar arm which enables one or more spindles to be moved into any desired position along the arm.



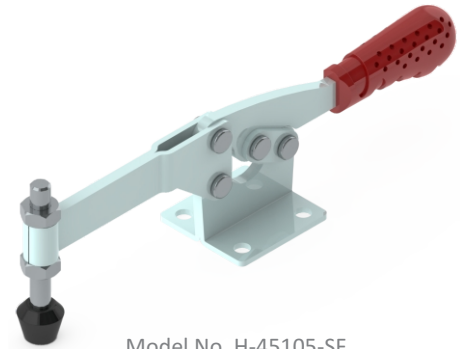
Drawing of H-45105



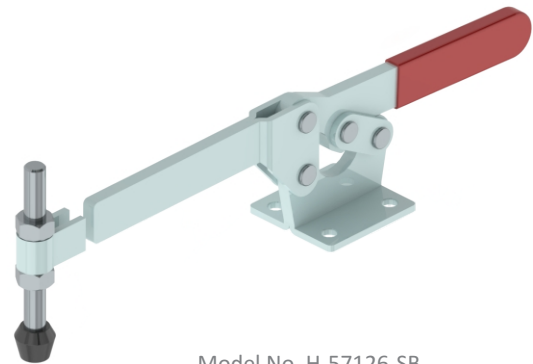
Model No. H-45105-UB



Drawing of H-57126



Model No. H-45105-SF



Model No. H-57126-SB

Model No.	Material	Finish	Arm Type	Base Type	Supplied With		Holding Capacity	
					Spindle Assembly	Washers	X2	X1
H-45105-UB	Steel	Zinc Plated	Adjustable Arm	Flanged Base	RT-1085-2N2W	M10-WSHR	1.30 kN	3.40 kN
H-45105-SF	Steel	Zinc Plated	Spindle Fixed	Flanged Base	RT-1085-2N	-	1.30 kN	-
H-45105-SB	Steel	Zinc Plated	Solid Arm	Flanged Base	RT-1085-2N	-	1.30 kN	3.40 kN
H-57126-UB	Steel	Zinc Plated	Adjustable Arm	Flanged Base	RT-12115-2N2W	M12-WSHR	2.00 kN	4.90 kN
H-57126-SF	Steel	Zinc Plated	Spindle Fixed	Flanged Base	RT-12115-2N	-	2.00 kN	-
H-57126-SB	Steel	Zinc Plated	Solid Arm	Flanged Base	RT-12115-2N	-	2.00 kN	4.90 kN

Model No.	Weight Kgs	Handle Opening	Bar Opening	Dimensions													
				A	A1	B	B1	C	D	E	F	G	H	J	K	T	SL
H-45105-UB	0.610	70°	85°	68	154	275	174	45	40	38	57.2	55	112	8.3	75	M10	86
H-45105-SF	0.610	70°	85°	68	154	275	174	45	40	38	57.2	55	112	8.3	104	M10	86
H-45105-SB	0.610	70°	85°	68	137	258	174	45	40	38	57.2	55	95	8.3	95	M10	86
H-57126-UB	1.080	67°	80°	82	194	322	196	55	45	40	65	62	145	8.5	86	M12	116
H-57126-SF	1.080	67°	82°	82	194	322	196	55	45	40	65	62	145	8.5	134.5	M12	116
H-57126-SB	1.080	67°	82°	82	196	327	197	55	45	40	65	62	150	8.5	150	M12	116