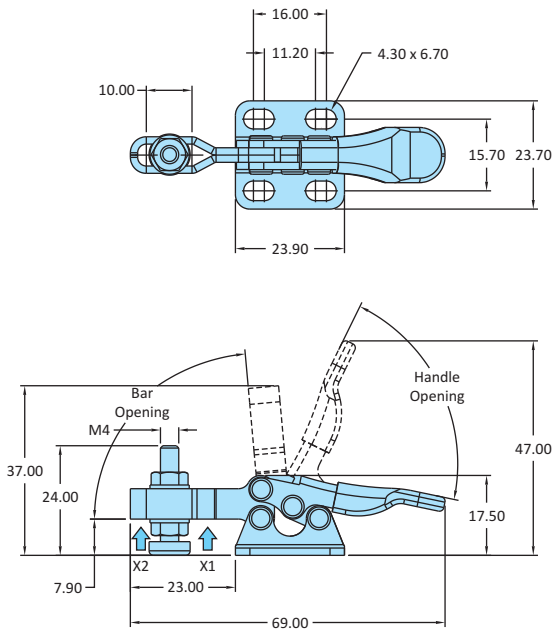
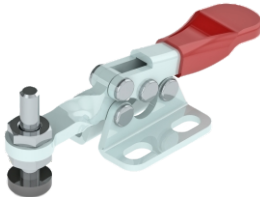
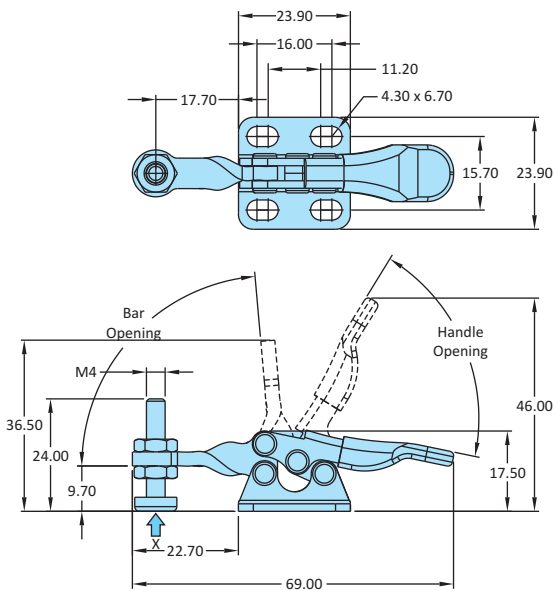
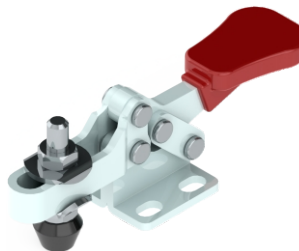
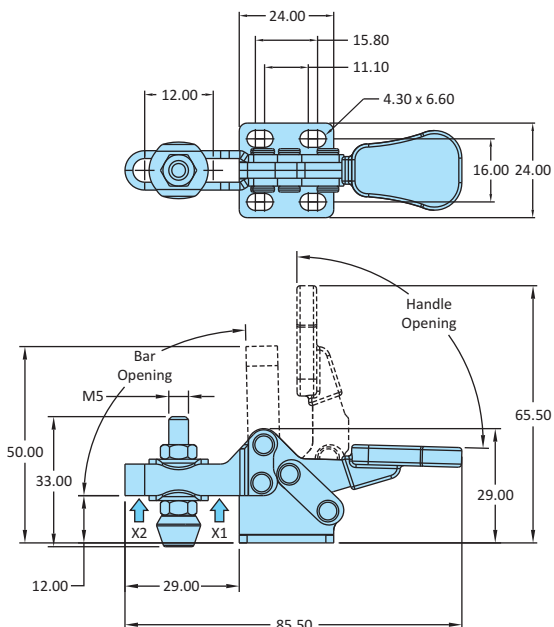


H-Series  
Miniature Clamps


Model No	H-205-U
Weight	0.030 Kgs
Handle Opening ( $\pm 3^\circ$ )	75°
Clamp Bar Opening ( $\pm 3^\circ$ )	85°
Holding Capacity	X1 - 0.30 kN
	X2 - 0.10 kN
Material	Steel
Finish	Zinc Plated
Arm Type	Adjustable Arm
Base Type	Flanged Base
Supplied with Spindle	RT-420-2N2W
Model No	H-205-U-SS
Material	Stainless Steel-304
Supplied with Spindle	RT-420-2N2W-SS

 H-Series  
Miniature Clamps


Model No	H-205-S
Weight	0.030 Kgs
Handle Opening ( $\pm 3^\circ$ )	70°
Clamp Bar Opening ( $\pm 3^\circ$ )	85°
Holding Capacity	X - 0.10 kN
Material	Steel
Finish	Zinc Plated
Arm Type	Solid Arm
Base Type	Flanged Base
Supplied with Spindle	RT-420-2N
Model No	H-205-S-SS
Material	Stainless Steel-304
Supplied with Spindle	RT-420-2N-SS

 H-Series  
Miniature Clamps


Model No	H-206-U
Weight	0.060 Kgs
Handle Opening ( $\pm 3^\circ$ )	90°
Clamp Bar Opening ( $\pm 3^\circ$ )	90°
Holding Capacity	X1 - 0.50 kN
	X2 - 0.20 kN
Material	Steel
Finish	Zinc Plated
Arm Type	Adjustable Arm
Base Type	Flanged Base
Supplied with Spindle	RT-533-2N2W