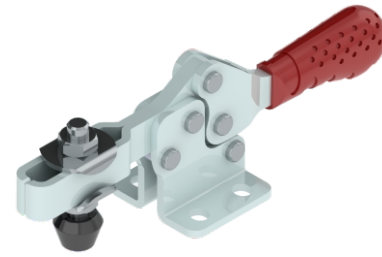
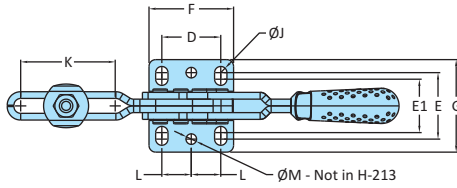
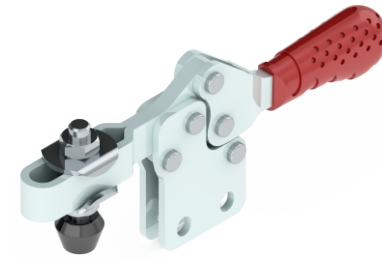
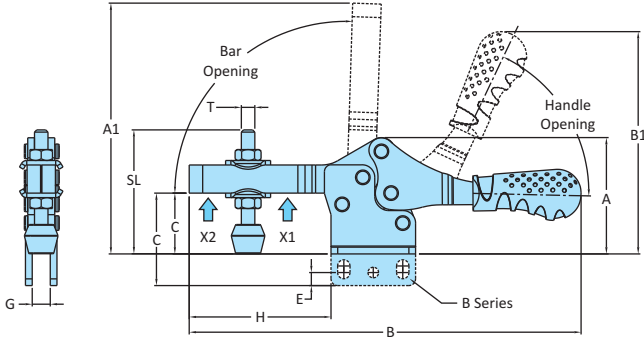
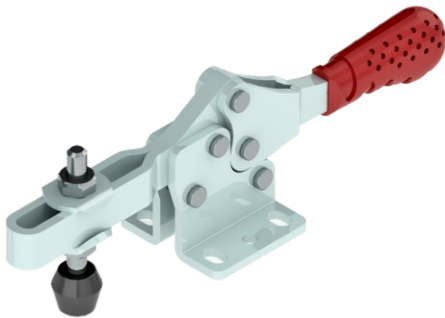


Horizontal Hold Down Action
 H-213, 217 Series


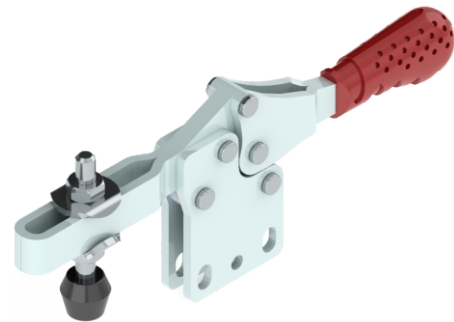
Model No. H-213-U



Model No. H-213-UB



Model No. H-217-U



Model No. H-217-UB

Model No.	Material	Finish	Arm Type	Base Type	Supplied With		Holding Capacity	
					Spindle Assembly	Washers	X2	X1
H-213-U	Steel	Zinc Plated	Adjustable Arm	Flanged Base	RT-533-2N2W	M5-WSHR	0.30 kN	0.70 kN
H-213-UB	Steel	Zinc Plated	Adjustable Arm	Straight Base	RT-533-2N2W	M5-WSHR	0.30 kN	0.70 kN
H-217-U	Steel	Zinc Plated	Adjustable Arm	Flanged Base	RT-655-2N2W	M6-WSHR	0.36 kN	1.00 kN
H-217-UB	Steel	Zinc Plated	Adjustable Arm	Straight Base	RT-655-2N2W	M6-WSHR	0.36 kN	1.00 kN
H-213-U-SS	Stainless Steel-304	Electro Polishing	Adjustable Arm	Flanged Base	RT-533-2N2W-SS	M5-WSHR-SS	0.30 kN	0.70 kN
H-213-UB-SS	Stainless Steel-304	Electro Polishing	Adjustable Arm	Straight Base	RT-533-2N2W-SS	M5-WSHR-SS	0.30 kN	0.70 kN
H-217-U-SS	Stainless Steel-304	Electro Polishing	Adjustable Arm	Flanged Base	RT-655-2N2W-SS	M6-WSHR-SS	0.36 kN	1.00 kN
H-217-UB-SS	Stainless Steel-304	Electro Polishing	Adjustable Arm	Straight Base	RT-655-2N2W-SS	M6-WSHR-SS	0.36 kN	1.00 kN

Model No.	Weight Kgs	Handle Opening	Bar Opening	Dimensions																
				A	A1	B	B1	C	D	E	E1	F	G	H	J	K	L	M	T	SL
H-213-U	0.070	60°	90°	36	72	111	62	19.5	13.5	17.6	19	25.5	28	39.5	4.3x5	24	-	-	M5	33
H-213-UB	0.070	60°	90°	44	80	111	70	27.5	13.5	4.5	-	25.5	4	39.5	4.3x5	24	-	-	M5	33
H-217-U	0.230	65°	92°	52	111	174	99	27	26.2	23.7	29.5	37.6	41.1	63	5.5x8.4	42	13.1	4.7	M6	55
H-217-UB	0.230	65°	92°	63	123	173	111	40.5	26.2	5.8	-	37.6	6	63	5.5x8.4	42	13.1	4.7	M6	55
H-213-U-SS	0.070	60°	90°	36	72	111	62	19.5	13.5	17.6	19	25.5	28	39.5	4.3x5	24	-	-	M5	33
H-213-UB-SS	0.070	60°	90°	44	80	111	70	27.5	13.5	4.5	-	25.5	4	39.5	4.3x5	24	-	-	M5	33
H-217-U-SS	0.230	65°	92°	52	111	174	99	27	26.2	23.7	29.5	37.6	41.1	63	5.5x8.4	42	13.1	4.7	M6	55
H-217-UB-SS	0.230	65°	92°	63	123	173	111	40.5	26.2	5.8	-	37.6	6	63	5.5x8.4	42	13.1	4.7	M6	55