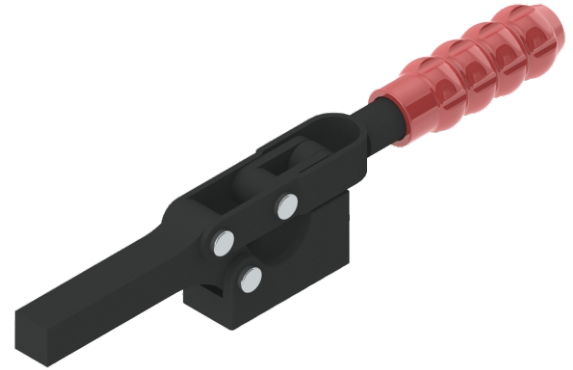
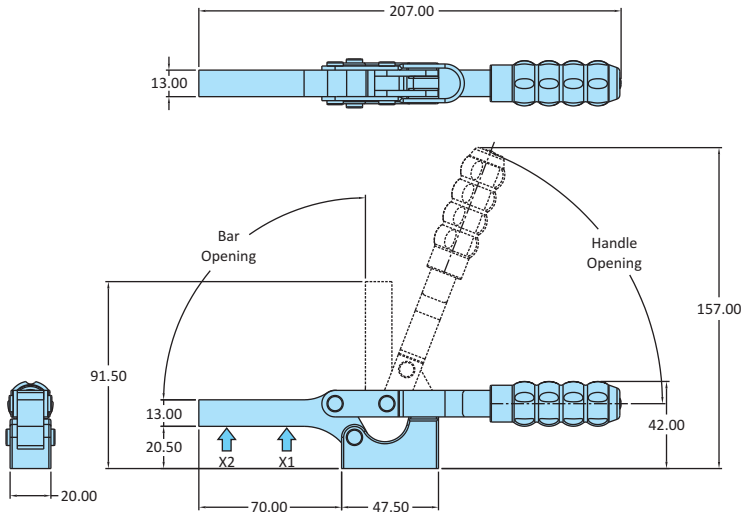


H-Series
 Heavy Duty Clamps

| | |
|-------------------------------------|------------------|
| Model No | H-5305-B-SB-HV |
| Weight | 0.370 Kgs |
| Handle Opening ($\pm 3^\circ$) | 69° |
| Clamp Bar Opening ($\pm 3^\circ$) | 90° |
| Holding Capacity | X1 - 2.50 kN |
| | X2 - 1.25 kN |
| Material | Steel |
| Finish | Black ED*Coating |
| Arm Type | Solid Arm |
| Base Type | Weldable Base |


 H-Series
 Heavy Duty Clamps

| | |
|-------------------------------------|------------------|
| Model No | H-5305-SB-HV |
| Weight | 0.490 Kgs |
| Handle Opening ($\pm 3^\circ$) | 69° |
| Clamp Bar Opening ($\pm 3^\circ$) | 90° |
| Holding Capacity | X1 - 2.50 kN |
| | X2 - 1.25 kN |
| Material | Steel |
| Finish | Black ED*Coating |
| Arm Type | Solid Arm |
| Base Type | Flanged Base |

