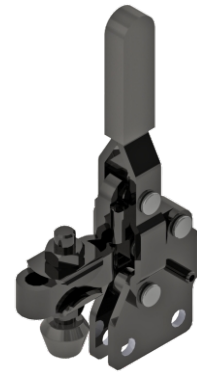
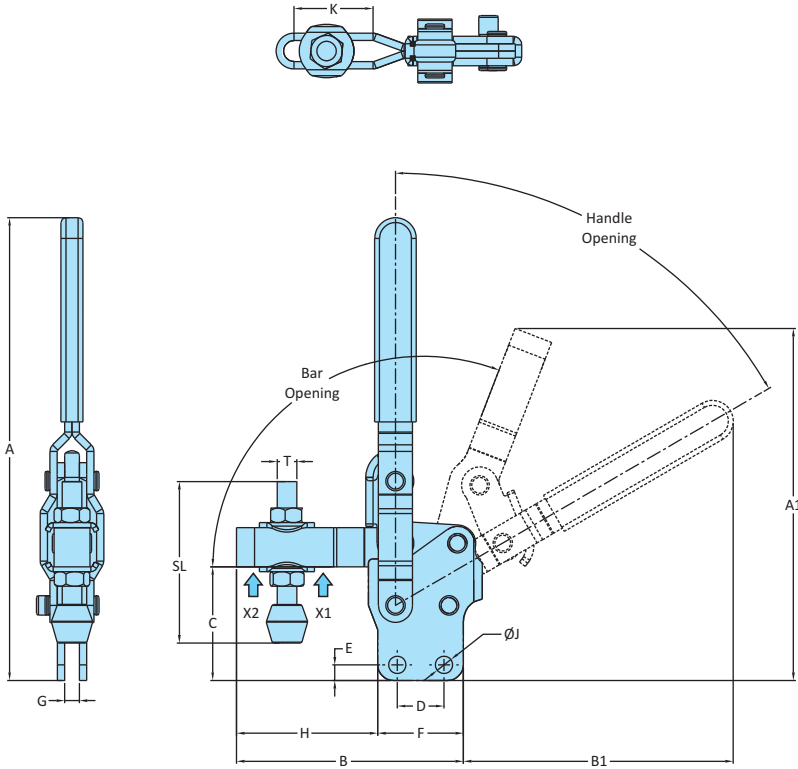
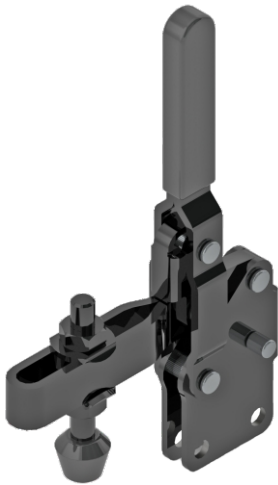


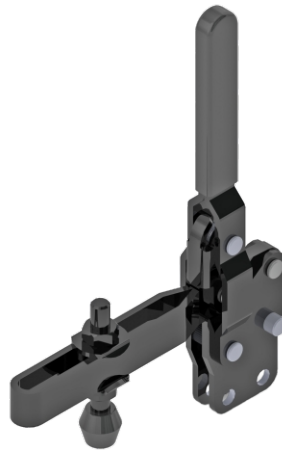
Vertical Hold Down Action
All Black Clamps



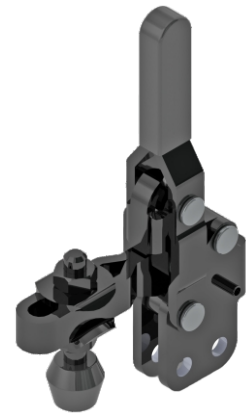
Model No.VTC-201-UB-AB



Model No.VTC-210-UB-AB



Model No.VTC-207-ULB-AB



Model No.VTC-202-UB-AB

Model No.	Material	Finish	Arm Type	Base Type	Supplied With		Holding Capacity	
					Spindle Assembly	Washers	X2	X1
VTC-201-UB-AB	Steel	Black ED*Coating	Adjustable Arm	Straight Base	RT-533-2N2W-AB	M5-WSHR-AB	0.24 kN	0.50 kN
VTC-202-UB-AB	Steel	Black ED*Coating	Adjustable Arm	Straight Base	RT-645-2N2W-AB	M6-WSHR-AB	0.62 kN	1.00 kN
VTC-202-ULB-AB	Steel	Black ED*Coating	Adjustable Arm	Straight Base	RT-645-2N2W-AB	M6-WSHR-AB	0.62 kN	1.00 kN
VTC-207-UB-AB	Steel	Black ED*Coating	Adjustable Arm	Straight Base	RT-865-2N2W-AB	M8-WSHR-AB	1.00 kN	1.70 kN
VTC-207-ULB-AB	Steel	Black ED*Coating	Adjustable Arm	Straight Base	RT-865-2N2W-AB	M8-WSHR-AB	0.70 kN	1.70 kN
VTC-210-UB-AB	Steel	Black ED*Coating	Adjustable Arm	Straight Base	RT-1085-2N2W-AB	M10-WSHR-AB	1.40 kN	2.70 kN

Model No.	Weight Kgs	Handle Opening	Bar Opening	Dimensions													
				A	A1	B	B1	C	D	E	F	G	H	J	K	T	SL
VTC-201-UB-AB	0.090	60°	110°	96.5	74.5	50.5	55	26.5	16	5	25	4	25.5	4.5	18.3	M5	33
VTC-202-UB-AB	0.160	64°	104°	129	105.5	71.3	74.5	35.1	12.7	6.8	25.5	6	45.8	5.5	25.4	M6	46
VTC-202-ULB-AB	0.160	64°	104°	129	120	86	74.5	35.1	12.7	6.8	25.5	6	60.5	5.5	40	M6	46
VTC-207-UB-AB	0.300	62°	115°	190	141.5	92.6	114	46.35	19.1	6.35	35.1	6	57.5	7.1	32	M8	66
VTC-207-ULB-AB	0.340	62°	115°	190	184	139.1	114	46.35	19.1	6.35	35.1	6	104	7.1	78.5	M8	66
VTC-210-UB-AB	0.590	58°	106°	220.5	204	139.6	112	65.5	31.8	9	48.6	8	91	8.3	60	M10	86