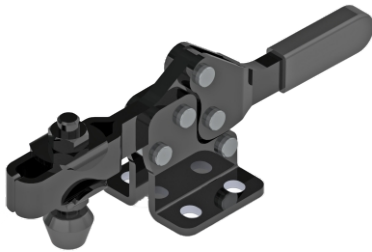
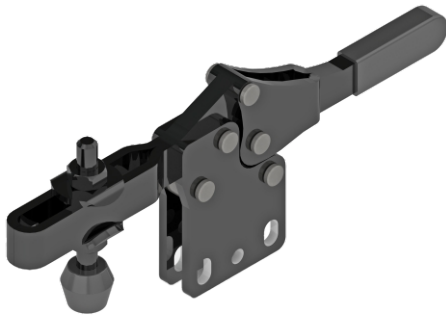


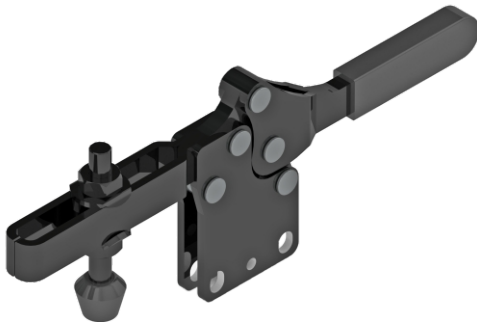
Horizontal Hold Down Action
All Black Clamps



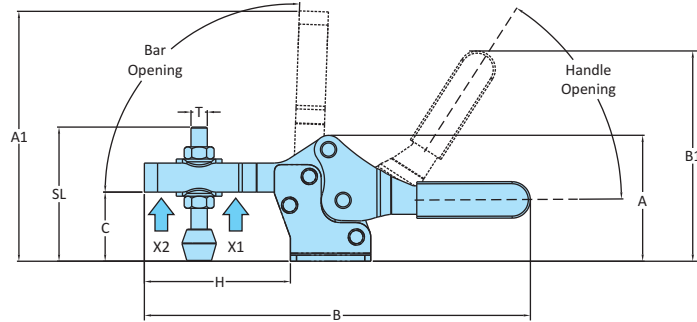
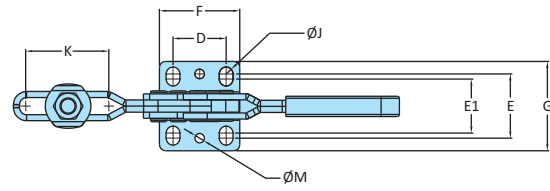
Model No.H-213-U-AB



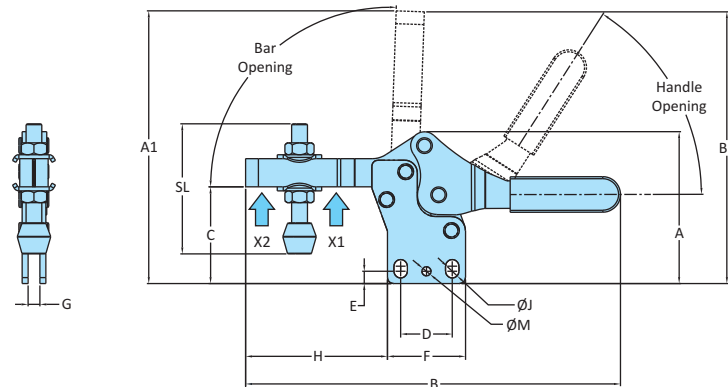
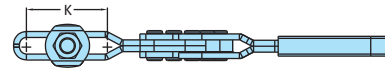
Model No.H-217-UB-AB



Model No.H-237-UB-AB



Drawing of Flanged Base Series



Drawing of Straight Base Series

Model No.	Material	Finish	Arm Type	Base Type	Supplied With		Holding Capacity	
					Spindle Assembly	Washers	X2	X1
H-213-U-AB	Steel	Black ED*Coating	Adjustable Arm	Flanged Base	RT-533-2N2W	M5-WSHR	0.30 kN	0.70 kN
H-213-UB-AB	Steel	Black ED*Coating	Adjustable Arm	Straight Base	RT-533-2N2W	M5-WSHR	0.30 kN	0.70 kN
H-217-U-AB	Steel	Black ED*Coating	Adjustable Arm	Flanged Base	RT-655-2N2W	M6-WSHR	0.36 kN	1.00 kN
H-217-UB-AB	Steel	Black ED*Coating	Adjustable Arm	Straight Base	RT-655-2N2W	M6-WSHR	0.36 kN	1.00 kN
H-227-U-AB	Steel	Black ED*Coating	Adjustable Arm	Flanged Base	RT-865-2N2W	M6-WSHR	1.00 kN	2.20 kN
H-227-UB-AB	Steel	Black ED*Coating	Adjustable Arm	Flanged Base	RT-865-2N2W	M8-WSHR	1.00 kN	2.20 kN
H-237-U-AB	Steel	Black ED*Coating	Adjustable Arm	Straight Base	RT-1085-2N2W	M8-WSHR	1.30 kN	3.40 kN
H-237-UB-AB	Steel	Black ED*Coating	Adjustable Arm	Flanged Base	RT-1085-2N2W	M8-WSHR	1.30 kN	3.40 kN

Model No.	Weight Kgs	Handle Opening	Bar Opening	Dimensions																
				A	A1	B	B1	C	D	E	E1	F	G	H	J	K	L	M	T	SL
H-213-U-AB	0.070	60°	110°	36	72	111	62	19.5	13.5	17.6	19	25.5	28	39.5	4.3x5	24	-	-	M5	33
H-213-UB-AB	0.070	60°	110°	52	111	174	99	27	26.2	23.7	29.5	37.6	41.1	63	5.5x8.4	42	13.1	4.7	M6	55
H-217-U-AB	0.230	64°	104°	62	123	210	121	34	26.2	31.6	26.6	39.6	44	72	6.8x9.3	41	13.1	4.7	M8	66
H-217-UB-AB	0.190	64°	104°	80	183	282	150	44	41.4	43	39	57.2	58	106.5	8.5x10.5	80	20.7	5.7	M10	86
H-227-U-AB	0.330	64°	104°	44	80	111	70	27.5	13.5	4.5	-	25.5	4	39.5	4.3x5	24	-	-	M5	33
H-227-UB-AB	0.300	62°	115°	63	123	173	111	40.5	26.2	5.8	-	37.6	6	63	5.5x8.4	42	13.1	4.7	M6	55
H-237-U-AB	0.750	62°	115°	77	138	210	136	49	26.2	6.2	-	39.6	6	72	6.8x9.3	41	13.1	4.7	M8	66
H-237-UB-AB	0.750	62°	115°	99	202	282	168.5	63	41.4	9	-	57.2	8	106.5	8.5x10.5	80	20.7	5.7	M10	86