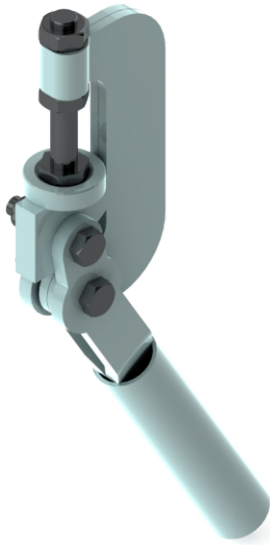
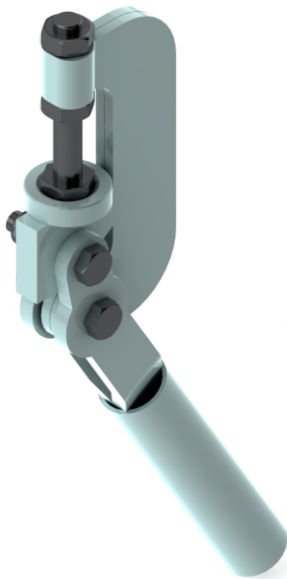


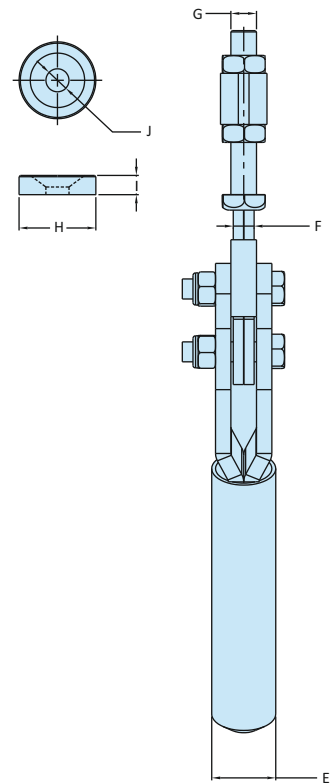
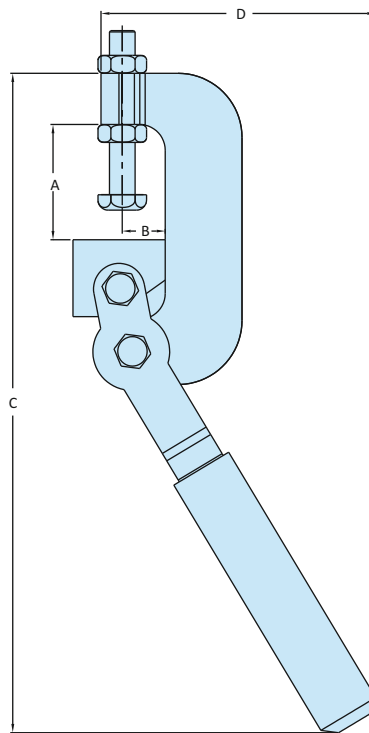
Pull Back Action
C-Type Series Weldable



Model No. PB-3518



Model No. PB-4522



Model No.	Material	Finish	Arm Type	Base Type	Supplied With		Holding Capacity
					Spindle Assembly	Bush	
PB-3518	Steel	Zinc Plated	Spindle Fixed	Weldable	SH-850-2N	CB-3518	1.00 kN
PB-5025-12	Steel	Zinc Plated	Spindle Fixed	Weldable	SH-860-2N	CB-5025-12	2.00 kN
PB-5025-10	Steel	Zinc Plated	Spindle Fixed	Weldable	SH-875-2N	CB-5025-10	2.90 kN
PB-4522	Steel	Zinc Plated	Spindle Fixed	Weldable	SH-875-2N	CB-4522	4.90 kN

Model No	Weight Kgs	Dimensions						
		A	B	C	D	E	F	Thread G
PB-3518	0.250	35	18	195	85	∅ 20	6	M8 x 50
PB-5025-12	0.890	45	22	270	115	∅ 25	8	M10 x 60
PB-5025-10	1.100	50	25	290	115	∅ 25	10	M10 x 75
PB-4522	1.280	50	25	305	115	∅ 25	12	M12 x 75