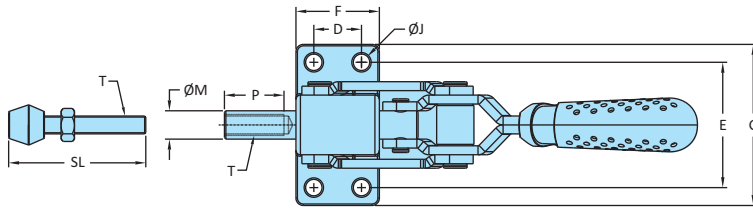
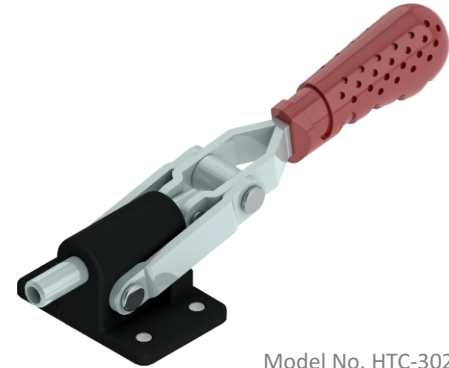
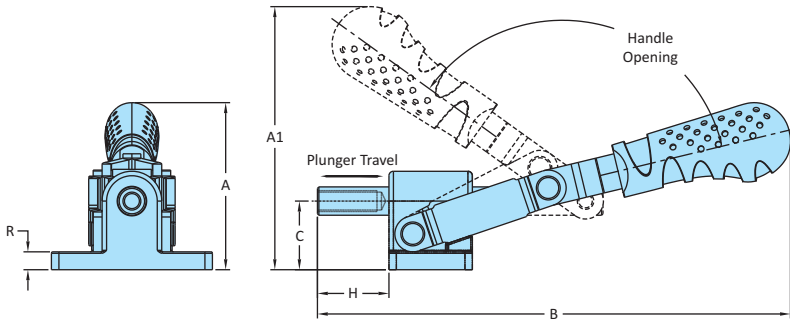


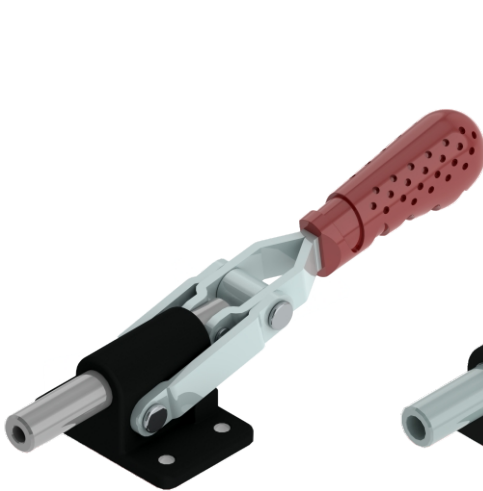
HTC-Series  
Medium/Heavy Duty Clamps-Flanged Base



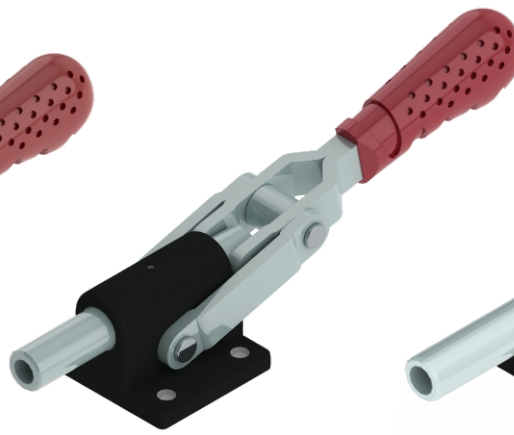
Model No. HTC-2326



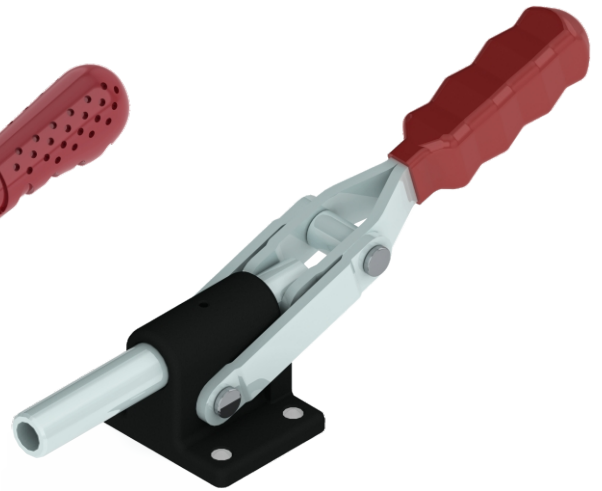
Model No. HTC-3025



Model No. HTC-3235



Model No. HTC-3545



Model No. HTC-5065

| Model No. | Material | Finish                    | Base Type    | Spindle Assembly | Plunger Travel | Holding Capacity |
|-----------|----------|---------------------------|--------------|------------------|----------------|------------------|
| HTC-2326  | Steel    | Zinc Plated/Powder Coated | Flanged Base | RT-645-1N        | 24             | 2.90 kN          |
| HTC-3025  | Steel    | Zinc Plated/Powder Coated | Flanged Base | RT-865-1N        | 25             | 10.80 kN         |
| HTC-3235  | Steel    | Zinc Plated/Powder Coated | Flanged Base | RT-1085-1N       | 35             | 15.00 kN         |
| HTC-3545  | Steel    | Zinc Plated/Powder Coated | Flanged Base | RT-12115-1N      | 46             | 25.50 kN         |
| HTC-5065  | Steel    | Zinc Plated/Powder Coated | Flanged Base | RT-16170-1N      | 70             | 44.10 kN         |

| Model No. | Weight Kgs | Handle Opening | Dimensions |     |     |    |    |    |    |     |    |      |     |    |    |          |     |
|-----------|------------|----------------|------------|-----|-----|----|----|----|----|-----|----|------|-----|----|----|----------|-----|
|           |            |                | A          | A1  | B   | C  | D  | E  | F  | G   | H  | J    | M   | P  | R  | T        | SL  |
| HTC-2326  | 0.310      | 131°           | 56         | 88  | 158 | 23 | 16 | 42 | 28 | 54  | 24 | 5.5  | 9.5 | 25 | 6  | M6x1     | 46  |
| HTC-3025  | 0.900      | 135°           | 64         | 128 | 230 | 30 | 30 | 55 | 50 | 75  | 25 | 6.5  | 12  | 30 | 6  | M8x1.25  | 66  |
| HTC-3235  | 1.100      | 135°           | 64         | 137 | 248 | 30 | 30 | 55 | 50 | 75  | 44 | 6.5  | 16  | 30 | 6  | M10x1.25 | 86  |
| HTC-3545  | 1.870      | 130°           | 85         | 156 | 299 | 35 | 45 | 60 | 68 | 78  | 46 | 8.5  | 20  | 30 | 9  | M12x1.75 | 116 |
| HTC-5065  | 3.320      | 131°           | 122        | 176 | 384 | 50 | 50 | 75 | 75 | 100 | 85 | 10.5 | 25  | 40 | 10 | M16x2.0  | 173 |