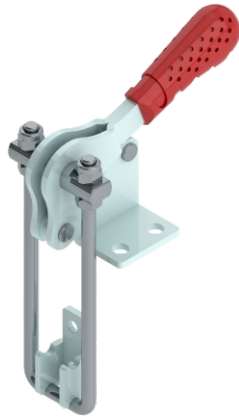


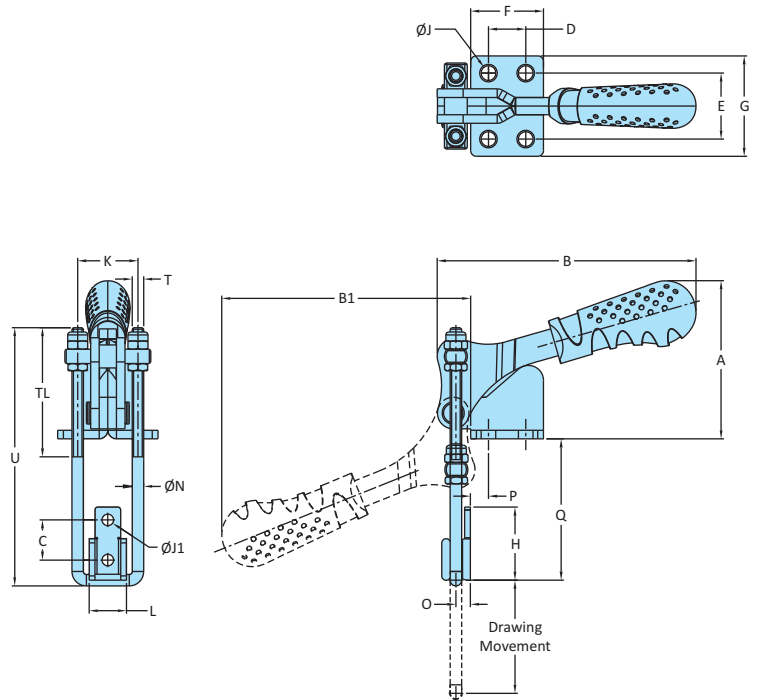
Pull Action Clamps
PAV Series



Model No. PAV-620



Model No. PAV-850



Model No	Material	Finish	Base Type	Drawing Movement	U Bolt Part Number	Front Hook Part Number	Holding Capacity
PAV-620	Steel	Zinc Plated	Flanged Base	39	M49045	FH-620324	1.00 kN
PAV-620-M25	Steel	Zinc Plated	Flanged Base	39	M411545	FH-620324	1.00 kN
PAV-620-M50	Steel	Zinc Plated	Flanged Base	39	M414045	FH-620324	1.00 kN
PAV-850	Steel	Zinc Plated	Flanged Base	54	M613055	FH-850334	4.90 kN
PAV-850-M25	Steel	Zinc Plated	Flanged Base	54	M615555	FH-850334	4.90 kN
PAV-850-M50	Steel	Zinc Plated	Flanged Base	54	M618055	FH-850334	4.90 kN
PAV-620-SS	Stainless Steel-304	Electro Polishing	Flanged Base	39	M49045-SS	FH-620324-SS	1.00 kN
PAV-620-M25-SS	Stainless Steel-304	Electro Polishing	Flanged Base	39	M411545-SS	FH-620324-SS	1.00 kN
PAV-620-M50-SS	Stainless Steel-304	Electro Polishing	Flanged Base	39	M414045-SS	FH-620324-SS	1.00 kN
PAV-850-SS	Stainless Steel-304	Electro Polishing	Flanged Base	54	M613055-SS	FH-850334-SS	4.90 kN
PAV-850-M25-SS	Stainless Steel-304	Electro Polishing	Flanged Base	54	M615555-SS	FH-850334-SS	4.90 kN
PAV-850-M50-SS	Stainless Steel-304	Electro Polishing	Flanged Base	54	M618055-SS	FH-850334-SS	4.90 kN

Model No	Weight Kgs	Dimensions																				
		A	B	B1	C	D	E	F	G	H	J	J1	K	L	N	O	P	Q Min	Q Max	U	T	TL
PAV-620	0.130	55	90.5	87	14	13	23	25.4	35	25.5	5.1	4.2	21	13	4	5	6.3	28	51	90	M4	45
PAV-620-M25	0.140	55	90.5	87	14	13	23	25.4	35	25.5	5.1	4.2	21	13	4	5	6.3	44	74	115	M4	45
PAV-620-M50	0.140	55	90.5	87	14	13	23	25.4	35	25.5	5.1	4.	21	13	4	5	6.3	71	101	140	M4	45
PAV-850	0.320	78	114	101	20.5	20.5	40	35	55	38	6.5	5.5	33	17	6	10	5	38	73	130	M6	55
PAV-850-M25	0.330	78	114	101	20.5	20.5	40	35	55	38	6.5	5.5	33	17	6	10	5	63	98	155	M6	55
PAV-850-M50	0.350	78	114	101	20.5	20.5	40	35	55	38	6.5	5.5	33	17	6	10	5	88	123	180	M6	55
PAV-620-SS	0.130	55	90.5	87	14	13	23	25.4	35	25.5	5.1	4.2	21	13	4	5	6.3	28	51	90	M4	45
PAV-620-M25-SS	0.140	55	90.5	87	14	13	23	25.4	35	25.5	5.1	4.2	21	13	4	5	6.3	44	74	115	M4	45
PAV-620-M50-SS	0.140	55	90.5	87	14	13	23	25.4	35	25.5	5.1	4.2	21	13	4	5	6.3	71	101	140	M4	45
PAV-850-SS	0.320	78	114	101	21	20.5	40	35	55	38	6.5	5.5	33	17	6	10	5	38	73	130	M6	55
PAV-850-M25-SS	0.330	78	114	101	21	20.5	40	35	55	38	6.5	5.5	33	17	6	10	5	63	98	155	M6	55
PAV-850-M50-SS	0.350	78	114	101	21	20.5	40	35	55	38	6.5	5.5	33	17	6	10	5	88	123	180	M6	55