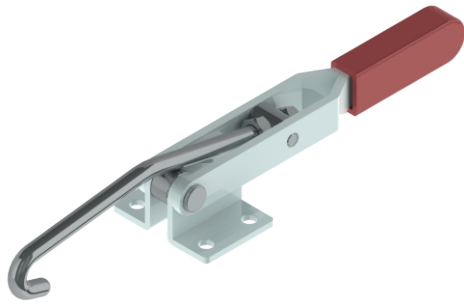
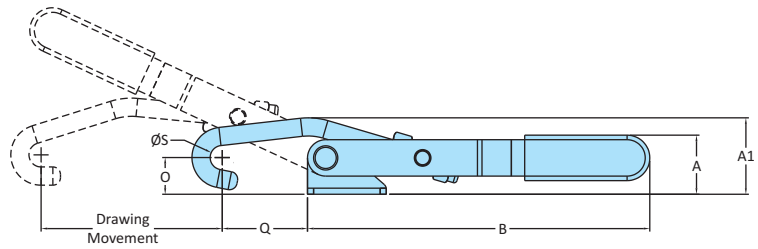
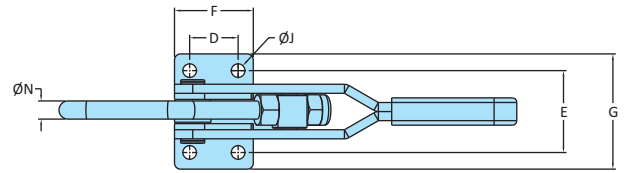


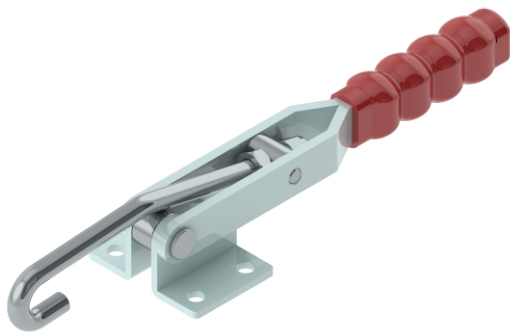
Pull Action Clamps
PA Series



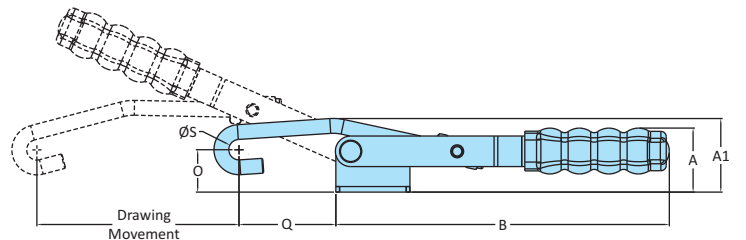
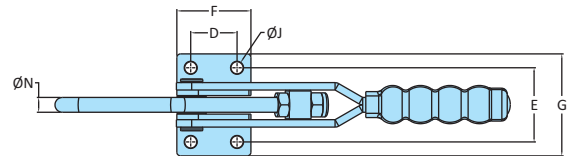
Model No. PA - 1010



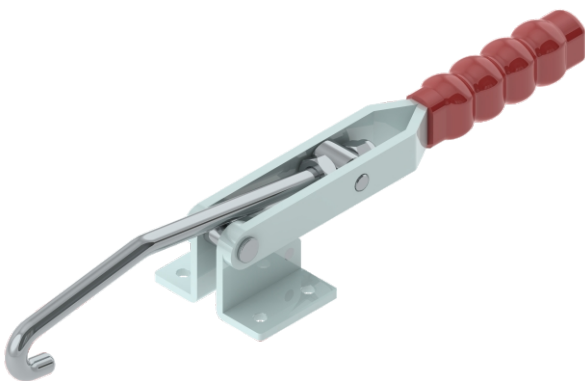
Drawing of PA-1010



Model No. PA - 2056



Drawing of PA-2056



Model No. PA - 3580

| Model No | Material | Finish | Base Type | Drawing Movement | J Rod Part Number | Holding Capacity |
|------------|---------------------|-------------------|--------------|------------------|-------------------|------------------|
| PA-1010 | Steel | Zinc Plated | Flanged Base | 60 | M68635J | 0.70 kN |
| PA-2056 | Steel | Zinc Plated | Flanged Base | 109 | M814740J | 2.00 kN |
| PA-3580 | Steel | Zinc Plated | Flanged Base | 137 | M1019950J | 3.90 kN |
| PA-4575 | Steel | Zinc Plated | Flanged Base | 145 | M1213670J | 4.90 kN |
| PA-2056-SS | Stainless Steel-304 | Electro Polishing | Flanged Base | 109 | M814740J-SS | 2.00 kN |

| Model No | Weight Kgs | Dimensions | | | | | | | | | | | | |
|------------|------------|------------|------|-----|----|----|----|----|------|----|----|-------|-------|----|
| | | A | A1 | B | D | E | F | G | J | N | O | Q Min | Q Max | S |
| PA-1010 | 0.120 | 19.5 | 25 | 113 | 16 | 27 | 26 | 38 | 4.5 | 6 | 12 | 20 | 28 | 8 |
| PA-2056 | 0.370 | 33.5 | 39.5 | 180 | 25 | 40 | 40 | 55 | 6.5 | 8 | 23 | 45 | 52 | 11 |
| PA-3580 | 0.750 | 51 | 59.5 | 230 | 30 | 48 | 49 | 67 | 6.5 | 10 | 34 | 88 | 109 | 12 |
| PA-4575 | 0.950 | 64 | 70.5 | 276 | 29 | 60 | 54 | 85 | 10.5 | 12 | 49 | 91 | 108 | 12 |
| PA-2056-SS | 0.370 | 33.5 | 39.5 | 180 | 25 | 40 | 40 | 55 | 6.5 | 8 | 23 | 45 | 52 | 11 |