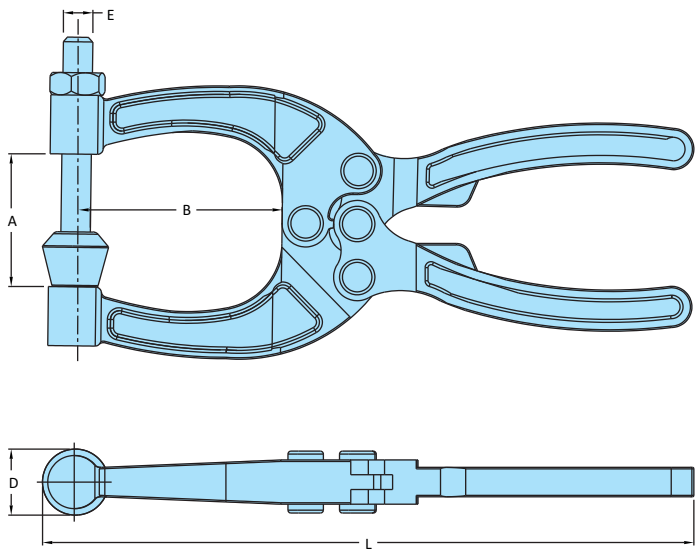


Model No. TP-4570



Model No. TP-2528



Model No. TP-3245

Model No.	Material	Finish	Spindle Assembly	Holding Capacity	Weight Kgs	Dimensions				
						A	B	DØ	E	L
TP-2528	Steel	Black ED Coated	RT-645-1N	1.00 kN	0.210	24.5	28	13	M6x1.0	114.5
TP-3245	Steel	Black ED Coated	RT-865-1N	2.00 kN	0.550	35.5	56	16	M8x1.25	194
TP-4570	Steel	Black ED Coated	RT-1085-1N	3.90 kN	0.690	45	70	18	M10x1.50	219